

## RPL7A Rabbit mAb

Catalog No: #56847

Package Size: #56847-1 50ul #56847-2 100ul

Orders: order@signalwayantibody.com

Support: tech@signalwayantibody.com

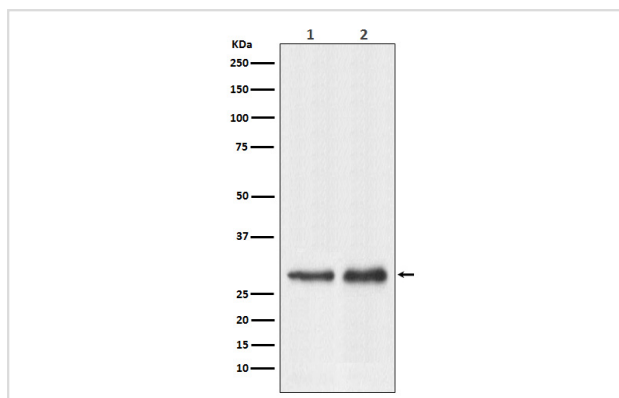
## Description

Product Name	RPL7A Rabbit mAb
Host Species	Rabbit
Clonality	Monoclonal
Isotype	Rabbit IgG
Purification	Affinity-chromatography
Applications	WB IHC
Species Reactivity	Human Mouse Rat
Specificity	RPL7A Antibody detects endogenous levels of total RPL7A
Immunogen Description	A synthesized peptide derived from human RPL7A
Other Names	PLA X polypeptide; RP23-414L19.4; RPL7A; SURF3; surfeit 3; TRUP;
Accession No.	Uniprot:P62424
Calculated MW	30kDa
Formulation	Rabbit IgG in phosphate buffered saline , pH 7.4, 150mM NaCl, 0.02% sodium azide and 50% glycerol.
Storage	Store at +4°C short term. Store at -20°C long term. Avoid freeze / thaw cycle.

## Application Details

WB:1:1000~1:5000IHC:1:50~1:200

## Images



Western blot analysis of RPL7A expression in (1) HeLa cell lysate; (2) Raw264.7 cell lysate.

## Product Description

Note=Chromosomal recombination involving RPL7A activates the receptor kinase domain of the TRK oncogene.

---

Note: This product is for in vitro research use only and is not intended for use in humans or animals.