

Kallikrein 5 Rabbit mAb

Catalog No: #56851

Package Size: #56851-1 50ul #56851-2 100ul

Orders: order@signalwayantibody.comSupport: tech@signalwayantibody.com

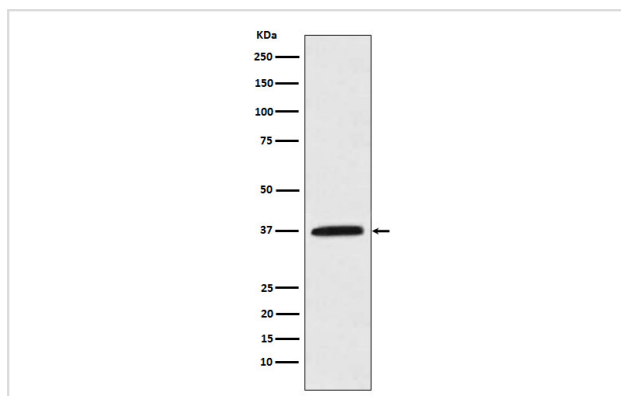
Description

Product Name	Kallikrein 5 Rabbit mAb
Host Species	Rabbit
Clonality	Monoclonal
Isotype	Rabbit IgG
Purification	Affinity-chromatography
Applications	WB ICC/IF FC
Species Reactivity	Human Mouse
Specificity	Kallikrein 5 Antibody detects endogenous levels of total Kallikrein 5
Immunogen Description	A synthesized peptide derived from human Kallikrein 5
Other Names	HK5; Kallikrein 5; Kallikrein L2; KLK 5; KLK L2; SCTE;
Accession No.	Uniprot:Q9Y337
Calculated MW	37kDa
Formulation	Rabbit IgG in phosphate buffered saline , pH 7.4, 150mM NaCl, 0.02% sodium azide and 50% glycerol.
Storage	Store at +4°C short term. Store at -20°C long term. Avoid freeze / thaw cycle.

Application Details

WB:1:500~1:2000 ICC/IF:1:50~1:200 FC:1:50

Images



Western blot analysis of Kallikrein 5 expression in MCF-7 cell lysate.

Product Description

May be involved in desquamation.

Note: This product is for in vitro research use only and is not intended for use in humans or animals.