

PROS1 Rabbit mAb

Catalog No: #56853



Package Size: #56853-1 50ul #56853-2 100ul

Orders: order@signalwayantibody.comSupport: tech@signalwayantibody.com

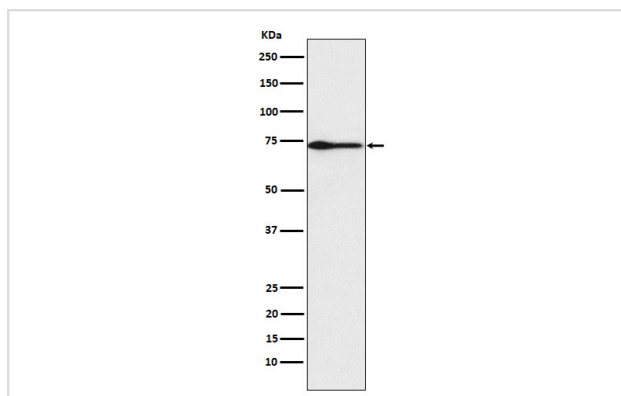
Description

Product Name	PROS1 Rabbit mAb
Host Species	Rabbit
Clonality	Monoclonal
Isotype	Rabbit IgG
Purification	Affinity-chromatography
Applications	WB
Species Reactivity	Human
Specificity	PROS1 Antibody detects endogenous levels of total PROS1
Immunogen Description	A synthesized peptide derived from human PROS1
Other Names	Preproprotein S; PROS; proS1; PS21; PS22; PS23; PS24; PS25; PS26; PSA; THPH5; THPH6;
Accession No.	Uniprot:P07225
Calculated MW	75kDa
Formulation	Rabbit IgG in phosphate buffered saline , pH 7.4, 150mM NaCl, 0.02% sodium azide and 50% glycerol.
Storage	Store at +4°C short term. Store at -20°C long term. Avoid freeze / thaw cycle.

Application Details

WB: 1:500~1:2000

Images



Western blot analysis of PROS1 expression in Human plasma lysate.

Product Description

Anticoagulant plasma protein; it is a cofactor to activated protein C in the degradation of coagulation factors Va and VIIIa. It helps to prevent coagulation and stimulating fibrinolysis.

Note: This product is for in vitro research use only and is not intended for use in humans or animals.