

IL32 Rabbit mAb

Catalog No: #56854



Package Size: #56854-1 50ul #56854-2 100ul

Orders: order@signalwayantibody.comSupport: tech@signalwayantibody.com

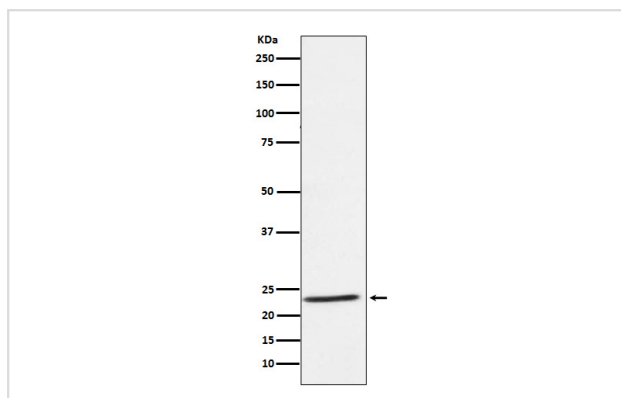
Description

| | |
|-----------------------|--|
| Product Name | IL32 Rabbit mAb |
| Host Species | Rabbit |
| Clonality | Monoclonal |
| Isotype | Rabbit IgG |
| Purification | Affinity-chromatography |
| Applications | WB |
| Species Reactivity | Human |
| Specificity | IL32 Antibody detects endogenous levels of total IL32 |
| Immunogen Description | A synthesized peptide derived from human IL32 |
| Other Names | IL 32alpha; IL 32beta; IL 32delta; IL 32gamma; IL32; NK4; TAIF; TAIFa; TAIFb; TAIFc; TAIFd; |
| Accession No. | Uniprot:P24001 |
| Calculated MW | 23kDa |
| Formulation | Rabbit IgG in phosphate buffered saline , pH 7.4, 150mM NaCl, 0.02% sodium azide and 50% glycerol. |
| Storage | Store at +4°C short term. Store at -20°C long term. Avoid freeze / thaw cycle. |

Application Details

WB: 1:500~1:2000

Images



Western blot analysis of IL32 expression in Human tonsil lysate.

Product Description

Cytokine that may play a role in innate and adaptive immune responses. It induces various cytokines such as TNFA/TNF-alpha and IL8. It activates typical cytokine signal pathways of NF-kappa-B and p38 MAPK.

Note: This product is for in vitro research use only and is not intended for use in humans or animals.