

## ETV6 Rabbit mAb

Catalog No: #56856

Package Size: #56856-1 50ul #56856-2 100ul

Orders: [order@signalwayantibody.com](mailto:order@signalwayantibody.com)Support: [tech@signalwayantibody.com](mailto:tech@signalwayantibody.com)

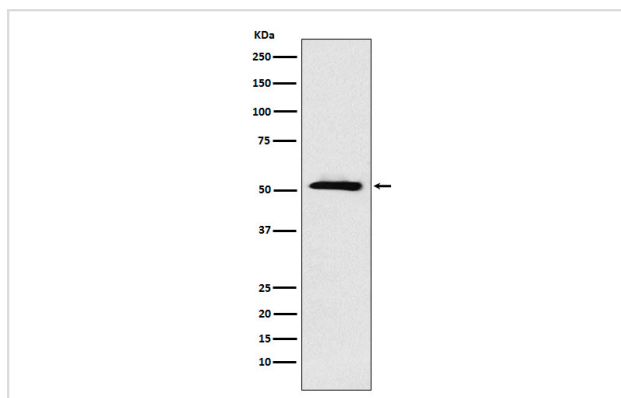
## Description

Product Name	ETV6 Rabbit mAb
Host Species	Rabbit
Clonality	Monoclonal
Isotype	Rabbit IgG
Purification	Affinity-chromatography
Applications	WB ICC/IF FC
Species Reactivity	Human
Specificity	ETV6 Antibody detects endogenous levels of total ETV6
Immunogen Description	A synthesized peptide derived from human ETV6
Other Names	ETV6; Tel; TEL oncogene; TEL/ABL; TEL1;
Accession No.	Uniprot:P41212
Calculated MW	53kDa
Formulation	Rabbit IgG in phosphate buffered saline , pH 7.4, 150mM NaCl, 0.02% sodium azide and 50% glycerol.
Storage	Store at +4°C short term. Store at -20°C long term. Avoid freeze / thaw cycle.

## Application Details

WB:1:500~1:2000 ICC/IF:1:50~1:200 FC:1:50

## Images



Western blot analysis of ETV6 expression in A431 cell lysate.

## Product Description

Transcriptional repressor; binds to the DNA sequence 5'-CCGGAAGT-3'.

---

Note: This product is for in vitro research use only and is not intended for use in humans or animals.