

## XRCC3 Rabbit mAb

Catalog No: #56862

Package Size: #56862-1 50ul #56862-2 100ul

Orders: [order@signalwayantibody.com](mailto:order@signalwayantibody.com)Support: [tech@signalwayantibody.com](mailto:tech@signalwayantibody.com)

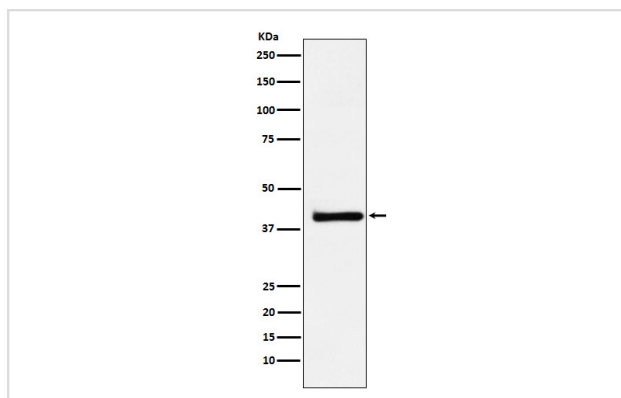
## Description

Product Name	XRCC3 Rabbit mAb
Host Species	Rabbit
Clonality	Monoclonal
Isotype	Rabbit IgG
Purification	Affinity-chromatography
Applications	WB FC
Species Reactivity	Human Mouse Rat
Specificity	XRCC3 Antibody detects endogenous levels of total XRCC3
Immunogen Description	A synthesized peptide derived from human XRCC3
Other Names	CMM6; XRCC3;
Accession No.	Uniprot:O43542
Calculated MW	42kDa
Formulation	Rabbit IgG in phosphate buffered saline , pH 7.4, 150mM NaCl, 0.02% sodium azide and 50% glycerol.
Storage	Store at +4°C short term. Store at -20°C long term. Avoid freeze / thaw cycle.

## Application Details

WB:1:500~1:2000FC:1:50

## Images



Western blot analysis of XRCC3 expression in HeLa cell lysate.

## Product Description

Involved in the homologous recombination repair (HRR) pathway of double-stranded DNA, thought to repair chromosomal fragmentation, translocations and deletions. Plays a role in regulating mitochondrial DNA copy number under conditions of oxidative stress in the presence of RAD51 and RAD51C.

---

Note: This product is for in vitro research use only and is not intended for use in humans or animals.