

## Placental lactogen Rabbit mAb

Catalog No: #56863

Package Size: #56863-1 50ul #56863-2 100ul

Orders: [order@signalwayantibody.com](mailto:order@signalwayantibody.com)Support: [tech@signalwayantibody.com](mailto:tech@signalwayantibody.com)

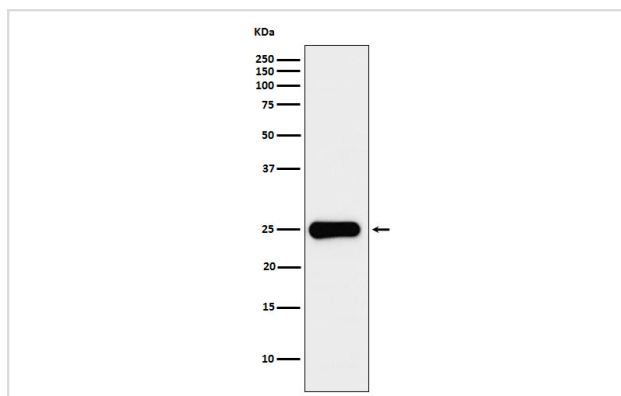
## Description

Product Name	Placental lactogen Rabbit mAb
Host Species	Rabbit
Clonality	Monoclonal
Isotype	Rabbit IgG
Purification	Affinity-chromatography
Applications	WB
Species Reactivity	Human
Specificity	Placental lactogen Antibody detects endogenous levels of total Placental lactogen
Immunogen Description	A synthesized peptide derived from human Placental lactogen
Other Names	CS-2; CS1; CSA; CSB; CSH1; CSH2; CSMT; hCS-B; hCSA; Lactogen; PL; PL1; Placental lactogen;
Accession No.	Uniprot:P01243
Calculated MW	25kDa
Formulation	Rabbit IgG in phosphate buffered saline , pH 7.4, 150mM NaCl, 0.02% sodium azide and 50% glycerol.
Storage	Store at +4°C short term. Store at -20°C long term. Avoid freeze / thaw cycle.

## Application Details

WB: 1:500~1:2000

## Images



Western blot analysis of Placental lactogen expression in JAR cell lysate.

## Product Description

Produced only during pregnancy and is involved in stimulating lactation, fetal growth and metabolism. Does not interact with GHR but only activates PRLR through zinc-induced dimerization.

---

Note: This product is for in vitro research use only and is not intended for use in humans or animals.