

SERPING1 Rabbit mAb

Catalog No: #56864

Package Size: #56864-1 50ul #56864-2 100ul

Orders: order@signalwayantibody.com

Support: tech@signalwayantibody.com

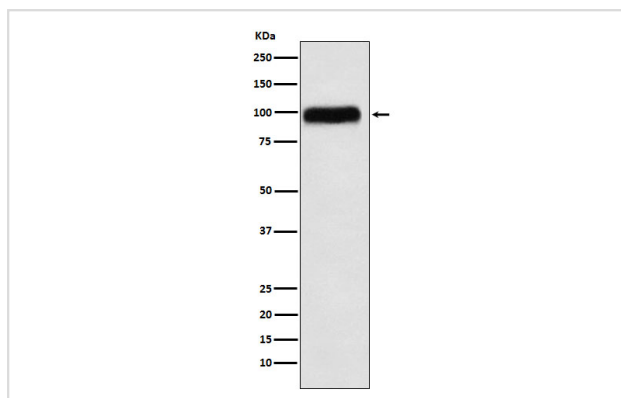
Description

| | |
|-----------------------|--|
| Product Name | SERPING1 Rabbit mAb |
| Host Species | Rabbit |
| Clonality | Monoclonal |
| Isotype | Rabbit IgG |
| Purification | Affinity-chromatography |
| Applications | WB IP |
| Species Reactivity | Human Mouse Rat |
| Specificity | SERPING1 Antibody detects endogenous levels of total SERPING1 |
| Immunogen Description | A synthesized peptide derived from human SERPING1 |
| Other Names | C1IN; C1Inh; C1NH; HAE1; HAE2; |
| Accession No. | Uniprot:P05155 |
| Calculated MW | 100kDa |
| Formulation | Rabbit IgG in phosphate buffered saline , pH 7.4, 150mM NaCl, 0.02% sodium azide and 50% glycerol. |
| Storage | Store at +4°C short term. Store at -20°C long term. Avoid freeze / thaw cycle. |

Application Details

WB:1:500~1:2000IP:1:50

Images



Western blot analysis of SERPING1 expression in Human plasma lysate.

Product Description

Activation of the C1 complex is under control of the C1-inhibitor. It forms a proteolytically inactive stoichiometric complex with the C1r or C1s proteases.

Note: This product is for in vitro research use only and is not intended for use in humans or animals.