

## PITX3 Rabbit mAb

Catalog No: #56866

Package Size: #56866-1 50ul #56866-2 100ul

Orders: [order@signalwayantibody.com](mailto:order@signalwayantibody.com)Support: [tech@signalwayantibody.com](mailto:tech@signalwayantibody.com)

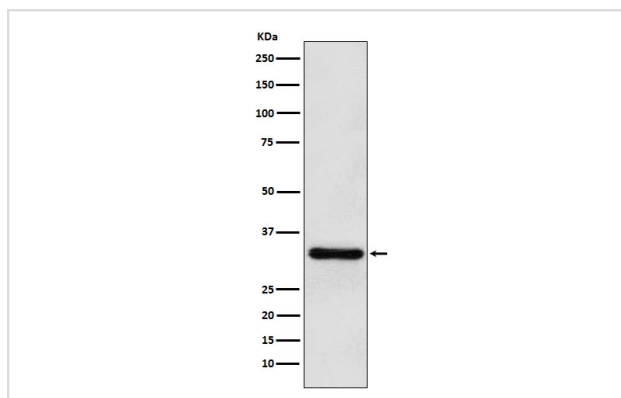
## Description

Product Name	PITX3 Rabbit mAb
Host Species	Rabbit
Clonality	Monoclonal
Isotype	Rabbit IgG
Purification	Affinity-chromatography
Applications	WB IP FC
Species Reactivity	Human Mouse Rat
Specificity	PITX3 Antibody detects endogenous levels of total PITX3
Immunogen Description	A synthesized peptide derived from human PITX3
Other Names	Pitx3; PTX3;
Accession No.	Uniprot:O75364
Calculated MW	32kDa
Formulation	Rabbit IgG in phosphate buffered saline , pH 7.4, 150mM NaCl, 0.02% sodium azide and 50% glycerol.
Storage	Store at +4°C short term. Store at -20°C long term. Avoid freeze / thaw cycle.

## Application Details

WB:1:500~1:2000IP:1:50FC:1:50

## Images



Western blot analysis of PITX3 expression in U87-MG cell lysate.

## Product Description

Transcriptional regulator which is important for the differentiation and maintenance of meso-diencephalic dopaminergic (mdDA) neurons during development. In addition to its importance during development, it also has roles in the long-term survival and maintenance of the mdDA neurons.

---

Note: This product is for in vitro research use only and is not intended for use in humans or animals.