

## CBR1 Rabbit mAb

Catalog No: #56869

Package Size: #56869-1 50ul #56869-2 100ul

Orders: [order@signalwayantibody.com](mailto:order@signalwayantibody.com)Support: [tech@signalwayantibody.com](mailto:tech@signalwayantibody.com)

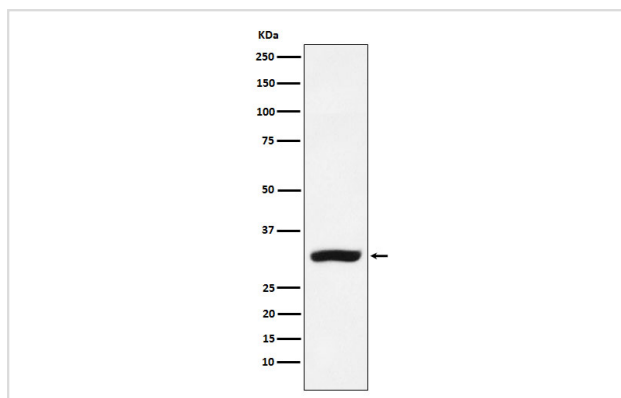
## Description

Product Name	CBR1 Rabbit mAb
Host Species	Rabbit
Clonality	Monoclonal
Isotype	Rabbit IgG
Purification	Affinity-chromatography
Applications	WB IP
Species Reactivity	Human Mouse Rat
Specificity	CBR1 Antibody detects endogenous levels of total CBR1
Immunogen Description	A synthesized peptide derived from human CBR1
Other Names	CBR1; CRN; SDR21C1;
Accession No.	Uniprot:P16152
Calculated MW	30kDa
Formulation	Rabbit IgG in phosphate buffered saline , pH 7.4, 150mM NaCl, 0.02% sodium azide and 50% glycerol.
Storage	Store at +4°C short term. Store at -20°C long term. Avoid freeze / thaw cycle.

## Application Details

WB:1:500~1:2000IP:1:50

## Images



Western blot analysis of CBR1 expression in MCF-7 cell lysate.

## Product Description

NADPH-dependent reductase with broad substrate specificity. Catalyzes the reduction of a wide variety of carbonyl compounds including quinones, prostaglandins, menadione, plus various xenobiotics.

---

Note: This product is for in vitro research use only and is not intended for use in humans or animals.