

LHX2 Rabbit mAb

Catalog No: #56872

Package Size: #56872-1 50ul #56872-2 100ul

Orders: order@signalwayantibody.comSupport: tech@signalwayantibody.com

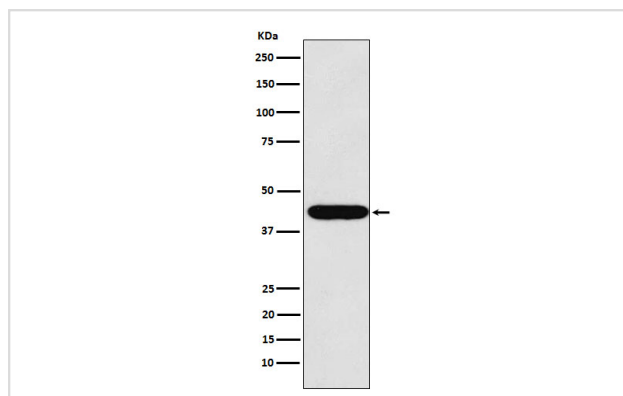
Description

Product Name	LHX2 Rabbit mAb
Host Species	Rabbit
Clonality	Monoclonal
Isotype	Rabbit IgG
Purification	Affinity-chromatography
Applications	WB
Species Reactivity	Human Mouse Rat
Specificity	LHX2 Antibody detects endogenous levels of total LHX2
Immunogen Description	A synthesized peptide derived from human LHX2
Other Names	hLhx2; LH2; LHX2; LIM homeobox 2;
Accession No.	Uniprot:P50458
Calculated MW	44kDa
Formulation	Rabbit IgG in phosphate buffered saline , pH 7.4, 150mM NaCl, 0.02% sodium azide and 50% glycerol.
Storage	Store at +4°C short term. Store at -20°C long term. Avoid freeze / thaw cycle.

Application Details

WB: 1:500~1:2000

Images



Western blot analysis of LHX2 expression in HeLa cell lysate.

Product Description

Acts as a transcriptional activator. Stimulates the promoter of the alpha-glycoprotein gene. Transcriptional regulatory protein involved in the control of cell differentiation in developing lymphoid and neural cell types.

Note: This product is for in vitro research use only and is not intended for use in humans or animals.