

## PROK1 Rabbit mAb

Catalog No: #56876

Package Size: #56876-1 50ul #56876-2 100ul

Orders: [order@signalwayantibody.com](mailto:order@signalwayantibody.com)Support: [tech@signalwayantibody.com](mailto:tech@signalwayantibody.com)

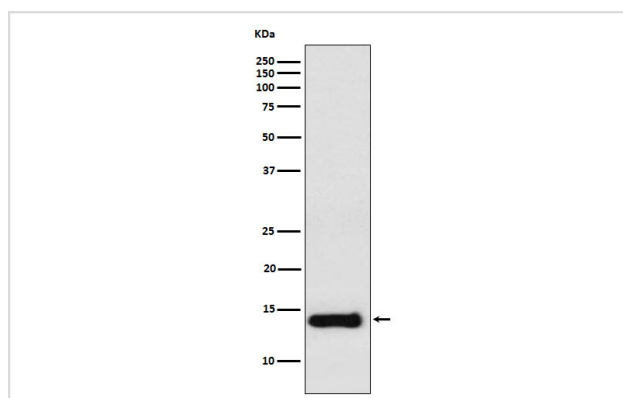
## Description

Product Name	PROK1 Rabbit mAb
Host Species	Rabbit
Clonality	Monoclonal
Isotype	Rabbit IgG
Purification	Affinity-chromatography
Applications	WB FC
Species Reactivity	Human Mouse
Specificity	PROK1 Antibody detects endogenous levels of total PROK1
Immunogen Description	A synthesized peptide derived from human PROK1
Other Names	EGVEGF; Mambakine; PK1; PRK1; PROK1; Prokineticin-1;
Accession No.	Uniprot:P58294
Calculated MW	14kDa
Formulation	Rabbit IgG in phosphate buffered saline , pH 7.4, 150mM NaCl, 0.02% sodium azide and 50% glycerol.
Storage	Store at +4°C short term. Store at -20°C long term. Avoid freeze / thaw cycle.

## Application Details

WB:1:500~1:2000FC:1:50

## Images



Western blot analysis of PROK1 expression in Raw264.7 cell lysate.

## Product Description

Potently contracts gastrointestinal (GI) smooth muscle. Induces proliferation, migration and fenestration (the formation of membrane discontinuities) in capillary endothelial cells derived from endocrine glands.

---

Note: This product is for in vitro research use only and is not intended for use in humans or animals.