

NLK Rabbit mAb

Catalog No: #56878

Package Size: #56878-1 50ul #56878-2 100ul

Orders: order@signalwayantibody.comSupport: tech@signalwayantibody.com

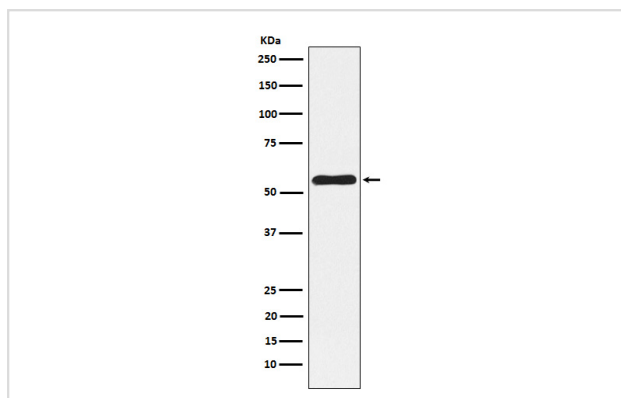
Description

Product Name	NLK Rabbit mAb
Host Species	Rabbit
Clonality	Monoclonal
Isotype	Rabbit IgG
Purification	Affinity-chromatography
Applications	WB FC
Species Reactivity	Human
Specificity	NLK Antibody detects endogenous levels of total NLK
Immunogen Description	A synthesized peptide derived from human NLK
Other Names	LAK1; Nemo like kinase; Nlk;
Accession No.	Uniprot:Q9UBE8
Calculated MW	58kDa
Formulation	Rabbit IgG in phosphate buffered saline , pH 7.4, 150mM NaCl, 0.02% sodium azide and 50% glycerol.
Storage	Store at +4°C short term. Store at -20°C long term. Avoid freeze / thaw cycle.

Application Details

WB:1:500~1:2000FC:1:50

Images



Western blot analysis of NLK expression in A375 cell lysate.

Product Description

Role in cell fate determination, required for differentiation of bone marrow stromal cells. Acts downstream of MAP3K7 and HIPK2 to negatively regulate the canonical Wnt/beta-catenin signaling pathway and the phosphorylation and destruction of the MYB transcription factor.

Note: This product is for in vitro research use only and is not intended for use in humans or animals.