

PDE2A Rabbit mAb

Catalog No: #56879



Package Size: #56879-1 50ul #56879-2 100ul

Orders: order@signalwayantibody.comSupport: tech@signalwayantibody.com

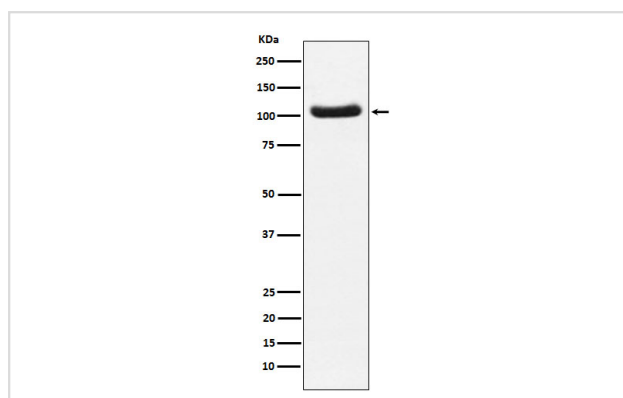
Description

Product Name	PDE2A Rabbit mAb
Host Species	Rabbit
Clonality	Monoclonal
Isotype	Rabbit IgG
Purification	Affinity-chromatography
Applications	WB
Species Reactivity	Human Mouse Rat
Specificity	PDE2A Antibody detects endogenous levels of total PDE2A
Immunogen Description	A synthesized peptide derived from human PDE2A
Other Names	CGS PDE; cGSPDE; PDE2A; PDE2A1; PDE2A4; phosphodiesterase 2A;
Accession No.	Uniprot:O00408
Calculated MW	106kDa
Formulation	Rabbit IgG in phosphate buffered saline , pH 7.4, 150mM NaCl, 0.02% sodium azide and 50% glycerol.
Storage	Store at +4°C short term. Store at -20°C long term. Avoid freeze / thaw cycle.

Application Details

WB:1:500~1:2000

Images



Western blot analysis of PDE2A expression in Human fetal brain lysate.

Product Description

Cyclic nucleotide phosphodiesterase with a dual-specificity for the second messengers cAMP and cGMP, which are key regulators of many important physiological processes.

Note: This product is for in vitro research use only and is not intended for use in humans or animals.