

PAG Rabbit mAb

Catalog No: #56885

Package Size: #56885-1 50ul #56885-2 100ul

Orders: order@signalwayantibody.comSupport: tech@signalwayantibody.com

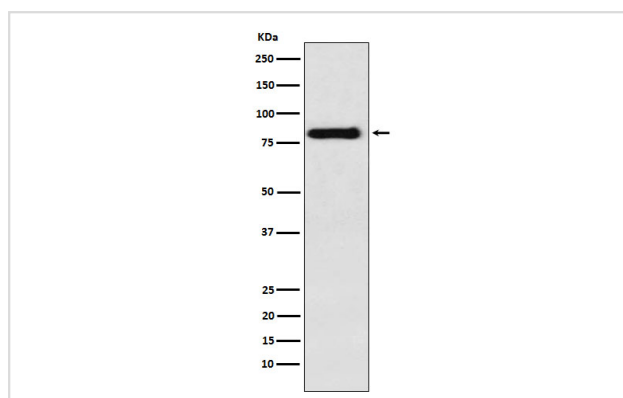
Description

Product Name	PAG Rabbit mAb
Host Species	Rabbit
Clonality	Monoclonal
Isotype	Rabbit IgG
Purification	Affinity-chromatography
Applications	WB IHC IP FC
Species Reactivity	Human Mouse Rat
Specificity	PAG Antibody detects endogenous levels of total PAG
Immunogen Description	A synthesized peptide derived from human PAG
Other Names	CBP; Csk binding protein; PAG; PAG1;
Accession No.	Uniprot:Q9NWX8
Calculated MW	80kDa
Formulation	Rabbit IgG in phosphate buffered saline , pH 7.4, 150mM NaCl, 0.02% sodium azide and 50% glycerol.
Storage	Store at +4°C short term. Store at -20°C long term. Avoid freeze / thaw cycle.

Application Details

WB:1:500~1:2000IHC:1:50~1:200IP:1:50FC:1:100

Images



Western blot analysis of PAG expression in Raji cell lysate.

Product Description

Negatively regulates TCR (T-cell antigen receptor)-mediated signaling in T-cells and FCER1 (high affinity immunoglobulin epsilon receptor)-mediated signaling in mast cells. Promotes CSK activation and recruitment to lipid rafts, which results in LCK inhibition. Inhibits immunological synapse formation by preventing dynamic arrangement of lipid raft proteins.

Note: This product is for in vitro research use only and is not intended for use in humans or animals.