

## CCL23 Rabbit mAb

Catalog No: #56887

Package Size: #56887-1 50ul #56887-2 100ul

Orders: order@signalwayantibody.com

Support: tech@signalwayantibody.com

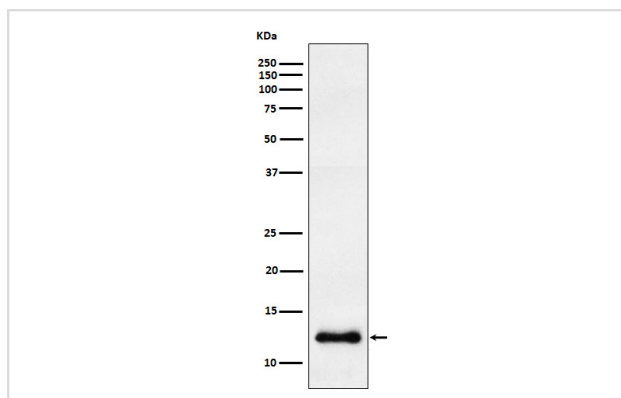
## Description

Product Name	CCL23 Rabbit mAb
Host Species	Rabbit
Clonality	Monoclonal
Isotype	Rabbit IgG
Purification	Affinity-chromatography
Applications	WB ICC/IF
Species Reactivity	Human
Specificity	CCL23 Antibody detects endogenous levels of total CCL23
Immunogen Description	A synthesized peptide derived from human CCL23
Other Names	CCL23; CKB8; Hmrp-2a; MIP3; MPIF1; SCYA23;
Accession No.	Uniprot:P55773
Calculated MW	13kDa
Formulation	Rabbit IgG in phosphate buffered saline , pH 7.4, 150mM NaCl, 0.02% sodium azide and 50% glycerol.
Storage	Store at +4°C short term. Store at -20°C long term. Avoid freeze / thaw cycle.

## Application Details

WB:1:500~1:2000 ICC/IF:1:50~1:200

## Images



Western blot analysis of CCL23 expression in HepG2 cell lysate.

## Product Description

Shows chemotactic activity for monocytes, resting T-lymphocytes, and neutrophils, but not for activated lymphocytes. Inhibits proliferation of myeloid progenitor cells in colony formation assays. This protein can bind heparin. Binds CCR1. CCL23(19-99), CCL23(22-99), CCL23(27-99), CCL23(30-99) are more potent chemoattractants than the small-inducible cytokine A23.

---

Note: This product is for in vitro research use only and is not intended for use in humans or animals.