

GCYA3 Rabbit mAb

Catalog No: #56889

Package Size: #56889-1 50ul #56889-2 100ul

Orders: order@signalwayantibody.comSupport: tech@signalwayantibody.com

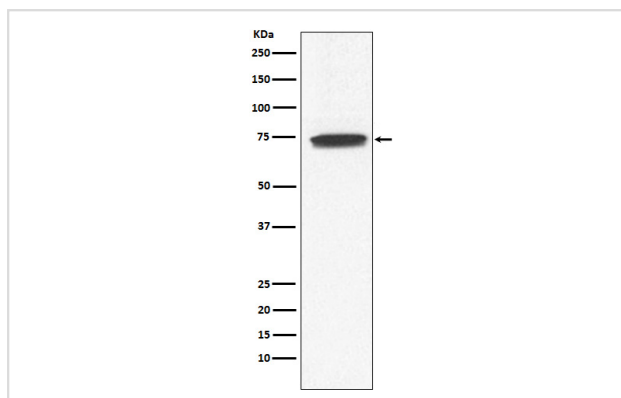
Description

Product Name	GCYA3 Rabbit mAb
Host Species	Rabbit
Clonality	Monoclonal
Isotype	Rabbit IgG
Purification	Affinity-chromatography
Applications	WB
Species Reactivity	Human
Specificity	GCYA3 Antibody detects endogenous levels of total GCYA3
Immunogen Description	A synthesized peptide derived from human GCYA3
Other Names	GUCY1A3; GC-S-alpha-1; GUC1A3; GUCA3; GCS-alpha-3; GUCY1A1; GC-SA3; GCS-alpha-1; GUCSA3;
Accession No.	Uniprot:Q02108
Calculated MW	73kDa
Formulation	Rabbit IgG in phosphate buffered saline , pH 7.4, 150mM NaCl, 0.02% sodium azide and 50% glycerol.
Storage	Store at +4°C short term. Store at -20°C long term. Avoid freeze / thaw cycle.

Application Details

WB: 1:500~1:2000

Images



Western blot analysis of GCYA3 expression in Human fetal kidney lysate.

Product Description

Belongs to the adenylyl cyclase class-4/guanylyl cyclase family. Contains 1 guanylate cyclase domain.

Note: This product is for in vitro research use only and is not intended for use in humans or animals.