

PRSS2 Rabbit mAb

Catalog No: #56890

Package Size: #56890-1 50ul #56890-2 100ul

Orders: order@signalwayantibody.comSupport: tech@signalwayantibody.com

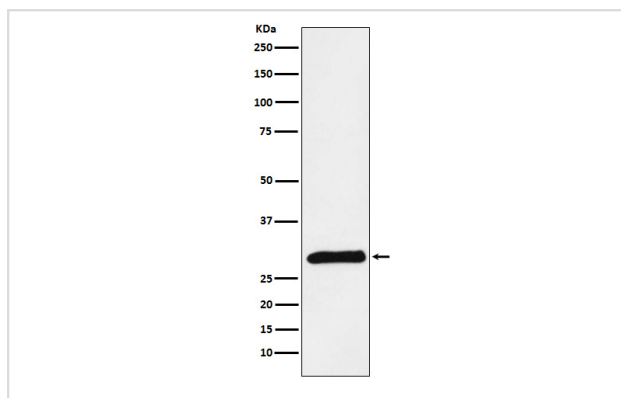
Description

Product Name	PRSS2 Rabbit mAb
Host Species	Rabbit
Clonality	Monoclonal
Isotype	Rabbit IgG
Purification	Affinity-chromatography
Applications	WB
Species Reactivity	Human Mouse Rat
Specificity	PRSS2 Antibody detects endogenous levels of total PRSS2
Immunogen Description	A synthesized peptide derived from human PRSS2
Other Names	Pancreatic anionic trypsinogen; Protease, serine, 2; PRSS2; TRYP8;
Accession No.	Uniprot:P07478
Calculated MW	30kDa
Formulation	Rabbit IgG in phosphate buffered saline , pH 7.4, 150mM NaCl, 0.02% sodium azide and 50% glycerol.
Storage	Store at +4°C short term. Store at -20°C long term. Avoid freeze / thaw cycle.

Application Details

WB:1:500~1:2000

Images



Western blot analysis of PRSS2 expression in Human pancreas lysate.

Product Description

Trypsinogen has been shown to have certain intrinsic activity. It is usually considered, however, as the inactive precursor of trypsin which may be activated by removal of a terminal hexapeptide to yield single chain b trypsin.

Note: This product is for in vitro research use only and is not intended for use in humans or animals.