

FSH beta Rabbit mAb

Catalog No: #56892



Package Size: #56892-1 50ul #56892-2 100ul

Orders: order@signalwayantibody.comSupport: tech@signalwayantibody.com

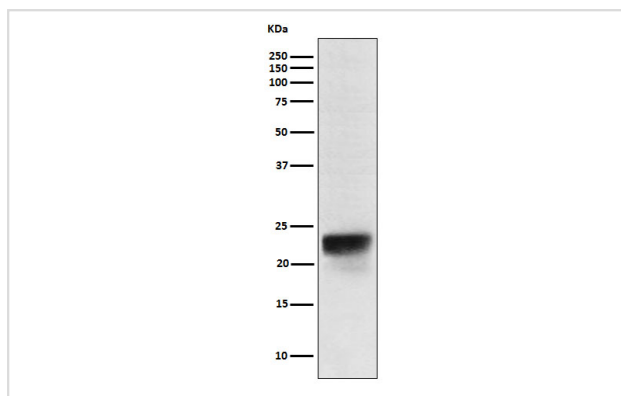
Description

Product Name	FSH beta Rabbit mAb
Host Species	Rabbit
Clonality	Monoclonal
Isotype	Rabbit IgG
Purification	Affinity-chromatography
Applications	WB ICC/IF
Species Reactivity	Human
Specificity	FSH beta Antibody detects endogenous levels of total FSH beta
Immunogen Description	A synthesized peptide derived from human FSH beta
Other Names	FSHB; FSHbeta;
Accession No.	Uniprot:P01225
Calculated MW	20kDa
Formulation	Rabbit IgG in phosphate buffered saline , pH 7.4, 150mM NaCl, 0.02% sodium azide and 50% glycerol.
Storage	Store at +4°C short term. Store at -20°C long term. Avoid freeze / thaw cycle.

Application Details

WB:1:500~1:1000 ICC/IF:1:50~1:200

Images



Western blot analysis of FSH beta expression in Human pituitary lysate.

Product Description

Follicle stimulating hormone enables ovarian folliculogenesis to the antral follicle stage and is essential for Sertoli cell proliferation and maintenance of sperm quality in the testis.

Note: This product is for in vitro research use only and is not intended for use in humans or animals.