

## STF1 Rabbit mAb

Catalog No: #56894

Package Size: #56894-1 50ul #56894-2 100ul

Orders: [order@signalwayantibody.com](mailto:order@signalwayantibody.com)Support: [tech@signalwayantibody.com](mailto:tech@signalwayantibody.com)

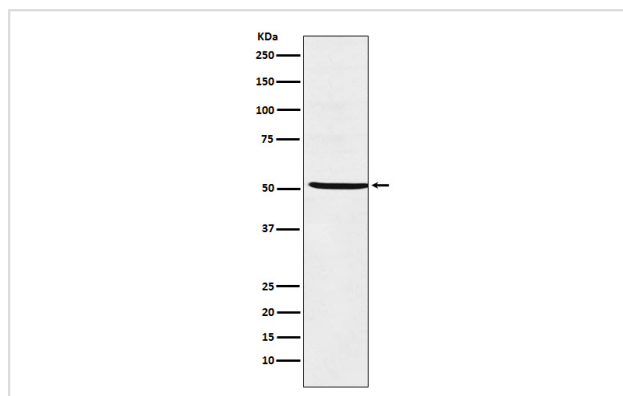
## Description

Product Name	STF1 Rabbit mAb
Host Species	Rabbit
Clonality	Monoclonal
Isotype	Rabbit IgG
Purification	Affinity-chromatography
Applications	WB
Species Reactivity	Human Mouse Rat
Specificity	STF1 Antibody detects endogenous levels of total STF1
Immunogen Description	A synthesized peptide derived from human STF1
Other Names	AD4BP; ELP; FTZ1; FTZF1; hSF 1; NR5A1; POF7; SF1; SPGF8; SRXY3; STF1;
Accession No.	Uniprot:Q13285
Calculated MW	52kDa
Formulation	Rabbit IgG in phosphate buffered saline , pH 7.4, 150mM NaCl, 0.02% sodium azide and 50% glycerol.
Storage	Store at +4°C short term. Store at -20°C long term. Avoid freeze / thaw cycle.

## Application Details

WB:1:500~1:2000

## Images



Western blot analysis of STF1 expression in Jutkat cell lysate.

## Product Description

Transcriptional activator. Seems to be essential for sexual differentiation and formation of the primary steroidogenic tissues. Binds to the Ad4 site found in the promoter region of steroidogenic P450 genes such as CYP11A, CYP11B and CYP21B.

---

Note: This product is for in vitro research use only and is not intended for use in humans or animals.