

ATP4B Rabbit mAb

Catalog No: #56898

Package Size: #56898-1 50ul #56898-2 100ul

Orders: order@signalwayantibody.comSupport: tech@signalwayantibody.com

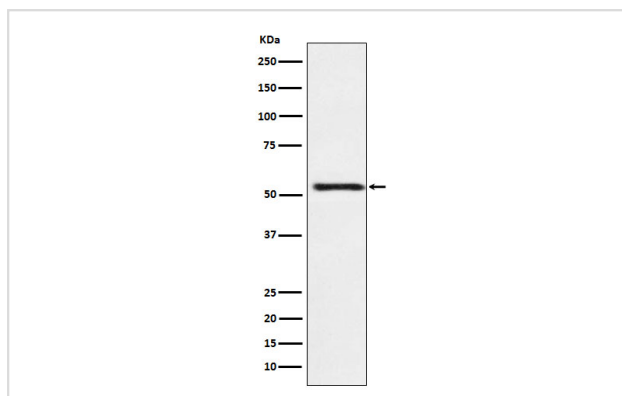
Description

Product Name	ATP4B Rabbit mAb
Host Species	Rabbit
Clonality	Monoclonal
Isotype	Rabbit IgG
Purification	Affinity-chromatography
Applications	WB
Species Reactivity	Human
Specificity	ATP4B Antibody detects endogenous levels of total ATP4B
Immunogen Description	A synthesized peptide derived from human ATP4B
Other Names	ATP4B; ATP6B;
Accession No.	Uniprot:P51164
Calculated MW	55kDa
Formulation	Rabbit IgG in phosphate buffered saline , pH 7.4, 150mM NaCl, 0.02% sodium azide and 50% glycerol.
Storage	Store at +4°C short term. Store at -20°C long term. Avoid freeze / thaw cycle.

Application Details

WB: 1:500~1:2000

Images



Western blot analysis of ATP4B expression in HepG2 cell lysate.

Product Description

Required for stabilization and maturation of the catalytic proton pump alpha subunit and may also involved in cell adhesion and establishing epithelial cell polarity.

Note: This product is for in vitro research use only and is not intended for use in humans or animals.