

DMP1 Rabbit mAb

Catalog No: #56899

Package Size: #56899-1 50ul #56899-2 100ul

Orders: order@signalwayantibody.comSupport: tech@signalwayantibody.com

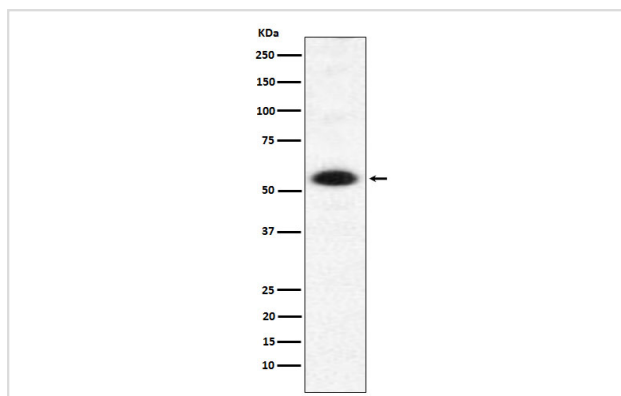
Description

Product Name	DMP1 Rabbit mAb
Host Species	Rabbit
Clonality	Monoclonal
Isotype	Rabbit IgG
Purification	Affinity-chromatography
Applications	WB ICC/IF
Species Reactivity	Human Mouse Rat
Specificity	DMP1 Antibody detects endogenous levels of total DMP1
Immunogen Description	A synthesized peptide derived from human DMP1
Other Names	DNA methyltransferase 1 associated protein 1; DNMAP1; DNMTAP1; EAF2; SWC4;
Accession No.	Uniprot:Q9NPF5
Calculated MW	53kDa
Formulation	Rabbit IgG in phosphate buffered saline , pH 7.4, 150mM NaCl, 0.02% sodium azide and 50% glycerol.
Storage	Store at +4°C short term. Store at -20°C long term. Avoid freeze / thaw cycle.

Application Details

WB:1:500~1:2000 ICC/IF:1:50~1:200

Images



Western blot analysis of DMAP1 expression in HeLa cell lysate.

Product Description

Involved in transcription repression and activation. Its interaction with HDAC2 may provide a mechanism for histone deacetylation in heterochromatin following replication of DNA at late firing origins.

Note: This product is for in vitro research use only and is not intended for use in humans or animals.