

## NAT10 Rabbit mAb

Catalog No: #56904

Package Size: #56904-1 50ul #56904-2 100ul

Orders: [order@signalwayantibody.com](mailto:order@signalwayantibody.com)Support: [tech@signalwayantibody.com](mailto:tech@signalwayantibody.com)

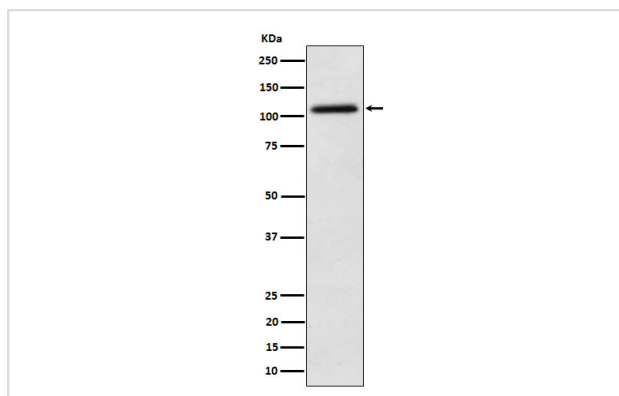
## Description

Product Name	NAT10 Rabbit mAb
Host Species	Rabbit
Clonality	Monoclonal
Isotype	Rabbit IgG
Purification	Affinity-chromatography
Applications	WB IHC ICC/IF IP FC
Species Reactivity	Human Mouse Rat
Specificity	NAT10 Antibody detects endogenous levels of total NAT10
Immunogen Description	A synthesized peptide derived from human NAT10
Other Names	ALP; hALP; N acetyltransferase like protein; NAT10; NET43;
Accession No.	Uniprot:Q9H0A0
Calculated MW	116kDa
Formulation	Rabbit IgG in phosphate buffered saline , pH 7.4, 150mM NaCl, 0.02% sodium azide and 50% glycerol.
Storage	Store at +4°C short term. Store at -20°C long term. Avoid freeze / thaw cycle.

## Application Details

WB:1:500~1:2000IHC:1:50~1:200ICC/IF:1:50~1:200IP:1:50FC:1:50

## Images



Western blot analysis of NAT10 expression in Hela cell lysate.

## Product Description

Has protein acetyltransferase activity in vitro. Can acetylate both histones and microtubules. Histone acetylation may regulate transcription and mitotic chromosome de-condensation.

---

Note: This product is for in vitro research use only and is not intended for use in humans or animals.