

CIRBP Rabbit mAb

Catalog No: #56906

Package Size: #56906-1 50ul #56906-2 100ul

Orders: order@signalwayantibody.com

Support: tech@signalwayantibody.com

Description

| | |
|-----------------------|--|
| Product Name | CIRBP Rabbit mAb |
| Host Species | Rabbit |
| Clonality | Monoclonal |
| Isotype | Rabbit IgG |
| Purification | Affinity-chromatography |
| Applications | WB IHC ICC/IF IP |
| Species Reactivity | Human |
| Specificity | CIRBP Antibody detects endogenous levels of total CIRBP |
| Immunogen Description | A synthesized peptide derived from CIRBP |
| Other Names | A18HNRNP; cirbp; CIRP; Cold inducible RNA binding protein; |
| Accession No. | Uniprot:Q14011 |
| Calculated MW | 19kDa |
| Formulation | Rabbit IgG in phosphate buffered saline , pH 7.4, 150mM NaCl, 0.02% sodium azide and 50% glycerol. |
| Storage | Store at +4°C short term. Store at -20°C long term. Avoid freeze / thaw cycle. |

Application Details

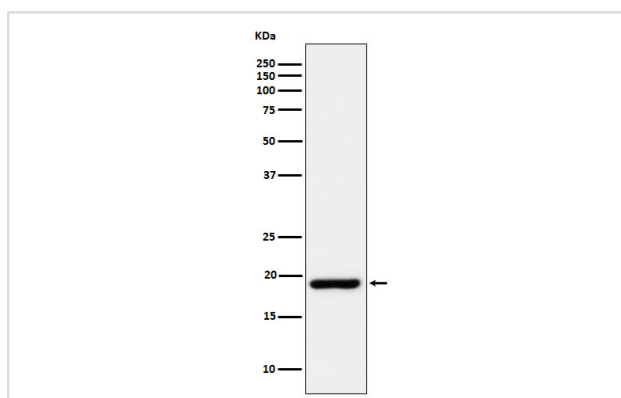
WB:1:500~1:2000

IHC:1:50~1:200

ICC/IF:1:50~1:200

IP:1:50

Images



Western blot analysis of CIRBP expression in HepG2 cell lysate.

Product Description

Cold-inducible mRNA binding protein that plays a protective role in the genotoxic stress response by stabilizing transcripts of genes involved in cell survival. Acts as a translational activator.

Note: This product is for in vitro research use only and is not intended for use in humans or animals.