

RANBP3 Rabbit mAb

Catalog No: #56913



Package Size: #56913-1 50ul #56913-2 100ul

Orders: order@signalwayantibody.comSupport: tech@signalwayantibody.com

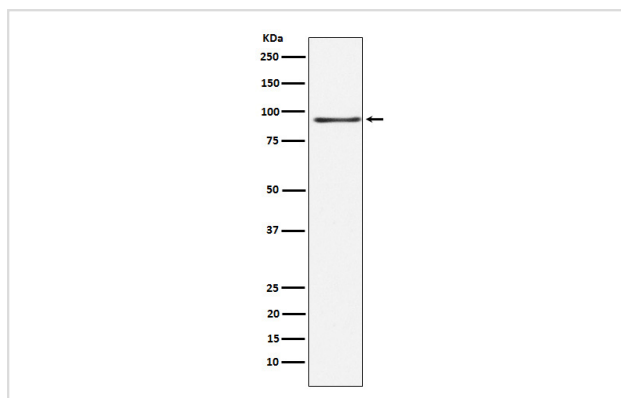
Description

Product Name	RANBP3 Rabbit mAb
Host Species	Rabbit
Clonality	Monoclonal
Isotype	Rabbit IgG
Purification	Affinity-chromatography
Applications	WB IHC ICC/IF IP FC
Species Reactivity	Human Mouse
Specificity	RANBP3 Antibody detects endogenous levels of total RANBP3
Immunogen Description	A synthesized peptide derived from RANBP3
Other Names	Ran binding protein 3; RanBP3;
Accession No.	Uniprot:Q9H6Z4
Calculated MW	70,90kDa
Formulation	Rabbit IgG in phosphate buffered saline , pH 7.4, 150mM NaCl, 0.02% sodium azide and 50% glycerol.
Storage	Store at +4°C short term. Store at -20°C long term. Avoid freeze / thaw cycle.

Application Details

WB:1:500~1:2000IHC:1:50~1:200ICC/IF:1:50~1:200IP:1:50FC:1:50

Images



Western blot analysis of RANBP3 expression in 293 cell lysate.

Product Description

Acts as a cofactor for XPO1/CRM1-mediated nuclear export, perhaps as export complex scaffolding protein. Bound to XPO1/CRM1, stabilizes the XPO1/CRM1-cargo interaction.

Note: This product is for in vitro research use only and is not intended for use in humans or animals.