

HLA-DRB4 Rabbit mAb

Catalog No: #56919

Package Size: #56919-1 50ul #56919-2 100ul

Orders: order@signalwayantibody.comSupport: tech@signalwayantibody.com

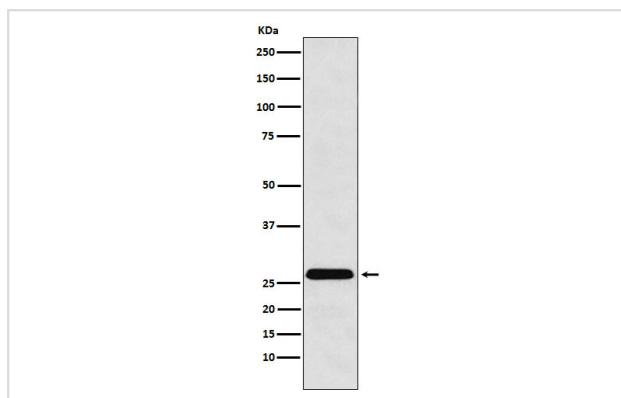
Description

Product Name	HLA-DRB4 Rabbit mAb
Host Species	Rabbit
Clonality	Monoclonal
Isotype	Rabbit IgG
Purification	Affinity-chromatography
Applications	WB IHC FC
Species Reactivity	Human
Specificity	HLA-DRB4 Antibody detects endogenous levels of total HLA-DRB4
Immunogen Description	A synthesized peptide derived from HLA-DRB4
Other Names	DR4; DRB4; HLA class II histocompatibility antigen; HLA-DRB4;
Accession No.	Uniprot:P13762
Calculated MW	30kDa
Formulation	Rabbit IgG in phosphate buffered saline , pH 7.4, 150mM NaCl, 0.02% sodium azide and 50% glycerol.
Storage	Store at +4°C short term. Store at -20°C long term. Avoid freeze / thaw cycle.

Application Details

WB:1:500~1:2000IHC:1:50~1:200FC:1:50

Images



Western blot analysis of HLA-DRB4 expression in Raji cell lysate.

Product Description

Binds peptides derived from antigens that access the endocytic route of antigen presenting cells (APC) and presents them on the cell surface for recognition by the CD4 T-cells.

Note: This product is for in vitro research use only and is not intended for use in humans or animals.