

## UCHL3 Rabbit mAb

Catalog No: #56922

Package Size: #56922-1 50ul #56922-2 100ul

Orders: [order@signalwayantibody.com](mailto:order@signalwayantibody.com)Support: [tech@signalwayantibody.com](mailto:tech@signalwayantibody.com)

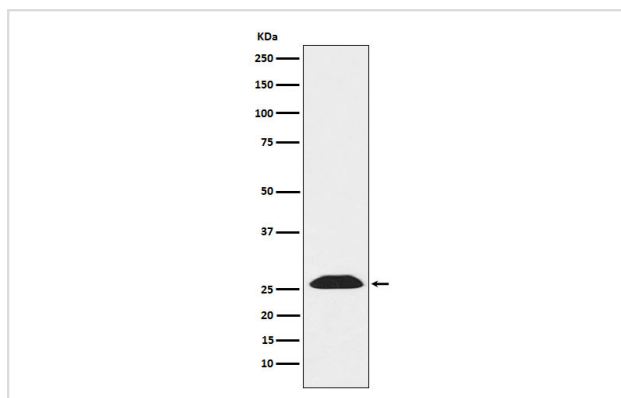
## Description

Product Name	UCHL3 Rabbit mAb
Host Species	Rabbit
Clonality	Monoclonal
Isotype	Rabbit IgG
Purification	Affinity-chromatography
Applications	WB IHC
Species Reactivity	Human Mouse Rat
Specificity	UCHL3 Antibody detects endogenous levels of total UCHL3
Immunogen Description	A synthesized peptide derived from UCHL3
Other Names	Ubiquitin thioesterase L3; UCHL3;
Accession No.	Uniprot:P15374
Calculated MW	26kDa
Formulation	Rabbit IgG in phosphate buffered saline , pH 7.4, 150mM NaCl, 0.02% sodium azide and 50% glycerol.
Storage	Store at +4°C short term. Store at -20°C long term. Avoid freeze / thaw cycle.

## Application Details

WB:1:500~1:2000IHC:1:50~1:200

## Images



Western blot analysis of UCHL3 expression in K562 cell lysate.

## Product Description

Deubiquitinating enzyme (DUB) that controls levels of cellular ubiquitin through processing of ubiquitin precursors and ubiquitinated proteins. Thiol protease that recognizes and hydrolyzes a peptide bond at the C-terminal glycine of either ubiquitin or NEDD8.

---

Note: This product is for in vitro research use only and is not intended for use in humans or animals.