

AP2S1 Rabbit mAb

Catalog No: #56927

Package Size: #56927-1 50ul #56927-2 100ul

Orders: order@signalwayantibody.com

Support: tech@signalwayantibody.com

Description

| | |
|-----------------------|--|
| Product Name | AP2S1 Rabbit mAb |
| Host Species | Rabbit |
| Clonality | Monoclonal |
| Isotype | Rabbit IgG |
| Purification | Affinity-chromatography |
| Applications | WB IHC IP |
| Species Reactivity | Human Mouse Rat |
| Specificity | AP2S1 Antibody detects endogenous levels of total AP2S1 |
| Immunogen Description | A synthesized peptide derived from AP2S1 |
| Other Names | AP17; Ap2s1; CLAPS2; Sigma adaptin 3b; Sigma2 adaptin; |
| Accession No. | Uniprot:P53680 |
| Calculated MW | 17kDa |
| Formulation | Rabbit IgG in phosphate buffered saline , pH 7.4, 150mM NaCl, 0.02% sodium azide and 50% glycerol. |
| Storage | Store at +4°C short term. Store at -20°C long term. Avoid freeze / thaw cycle. |

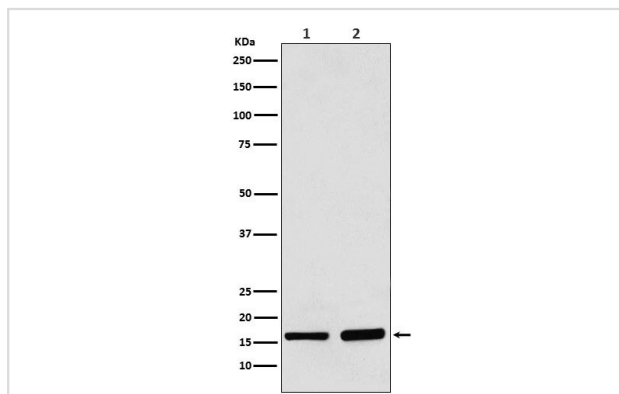
Application Details

WB:1:500~1:2000

IHC:1:50~1:200

IP:1:50

Images



Western blot analysis of AP2S1 expression in (1) 293 cell lysate; (2) Mouse brain lysate.

Product Description

Component of the adaptor protein complex 2 (AP-2). Adaptor protein complexes function in protein Transport via Transport vesicles in different membrane traffic pathways.

Note: This product is for in vitro research use only and is not intended for use in humans or animals.