

## Collagen III Rabbit mAb

Catalog No: #56933



Package Size: #56933-1 50ul #56933-2 100ul

Orders: order@signalwayantibody.com

Support: tech@signalwayantibody.com

## Description

Product Name	Collagen III Rabbit mAb
Host Species	Rabbit
Clonality	Monoclonal
Isotype	Rabbit IgG
Purification	Affinity-chromatography
Applications	WB ICC/IF IP FC
Species Reactivity	Human, Mouse, Rat
Specificity	Collagen III Antibody detects endogenous levels of total Collagen III
Immunogen Description	A synthesized peptide derived from Collagen III
Other Names	Alpha 1 type III collagen; COL3A1; Collagen III alpha 1 chain precursor; Collagen type III alpha ; EDS4A; Fetal collagen; Type III collagen;
Accession No.	Uniprot:P02461
Calculated MW	150kDa
Formulation	Rabbit IgG in phosphate buffered saline , pH 7.4, 150mM NaCl, 0.02% sodium azide and 50% glycerol.
Storage	Store at +4°C short term. Store at -20°C long term. Avoid freeze / thaw cycle.

## Application Details

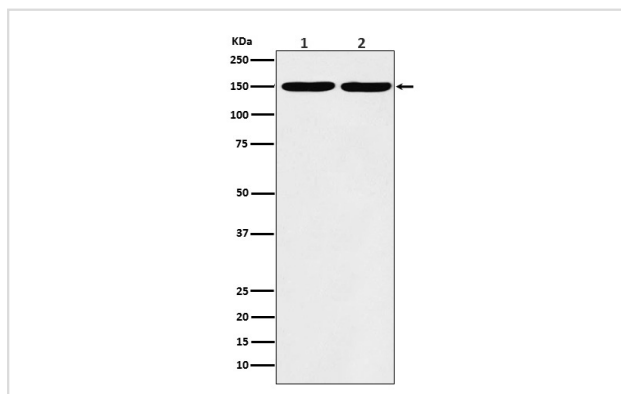
WB: 1:500~1:2000

ICC/IF: 1:50~1:200

IP: 1:50

FC: 1:50

## Images



Western blot analysis of Collagen III expression in (1) A431 cell lysate; (2) MCF7 cell lysate.

## Product Description

Collagen type III occurs in most soft connective tissues along with type I collagen.

---

Note: This product is for in vitro research use only and is not intended for use in humans or animals.