

## MED4 Rabbit mAb

Catalog No: #56939

Package Size: #56939-1 50ul #56939-2 100ul

Orders: order@signalwayantibody.com

Support: tech@signalwayantibody.com

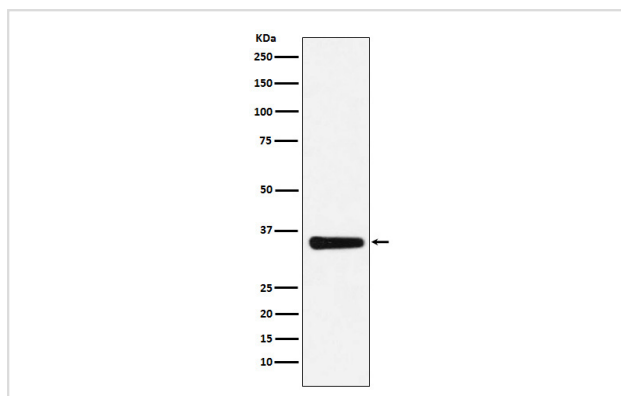
## Description

Product Name	MED4 Rabbit mAb
Host Species	Rabbit
Clonality	Monoclonal
Isotype	Rabbit IgG
Purification	Affinity-chromatography
Applications	WB IHC ICC/IF
Species Reactivity	Human Mouse Rat
Specificity	MED4 Antibody detects endogenous levels of total MED4
Immunogen Description	A synthesized peptide derived from human MED4
Other Names	ARC36; DRIP36; HSPC126; med4; TRAP36; VDRIP;
Accession No.	Uniprot:Q9NPJ6
Calculated MW	35kDa
Formulation	Rabbit IgG in phosphate buffered saline , pH 7.4, 150mM NaCl, 0.02% sodium azide and 50% glycerol.
Storage	Store at +4°C short term. Store at -20°C long term. Avoid freeze / thaw cycle.

## Application Details

WB:1:500~1:2000IHC:1:50~1:200ICC/IF:1:50~1:200

## Images



Western blot analysis of MED4 expression in HepG2 cell lysate.

## Product Description

Mouse, Rat, Human, Xenopus laevis

---

Note: This product is for in vitro research use only and is not intended for use in humans or animals.