

## SUOX Rabbit mAb

Catalog No: #56945

Package Size: #56945-1 50ul #56945-2 100ul

Orders: [order@signalwayantibody.com](mailto:order@signalwayantibody.com)Support: [tech@signalwayantibody.com](mailto:tech@signalwayantibody.com)

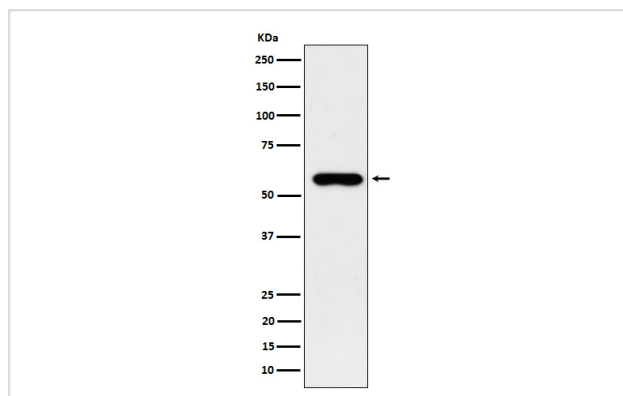
## Description

Product Name	SUOX Rabbit mAb
Host Species	Rabbit
Clonality	Monoclonal
Isotype	Rabbit IgG
Purification	Affinity-chromatography
Applications	WB IHC
Species Reactivity	Human Rat
Specificity	SUOX Antibody detects endogenous levels of total SUOX
Immunogen Description	A synthesized peptide derived from human SUOX
Other Names	Sulfite oxidase; Suox;
Accession No.	Uniprot:P51687
Calculated MW	60kDa
Formulation	Rabbit IgG in phosphate buffered saline , pH 7.4, 150mM NaCl, 0.02% sodium azide and 50% glycerol.
Storage	Store at +4°C short term. Store at -20°C long term. Avoid freeze / thaw cycle.

## Application Details

WB:1:500~1:2000IHC:1:50~1:200

## Images



Western blot analysis of SUOX expression in 293T cell lysate.

## Product Description

Catalytic activity: Sulfite + O<sub>2</sub> + H<sub>2</sub>O = sulfate + H<sub>2</sub>O<sub>2</sub>.

---

Note: This product is for in vitro research use only and is not intended for use in humans or animals.