

Erlin-2 Rabbit mAb

Catalog No: #56948

Package Size: #56948-1 50ul #56948-2 100ul

Orders: order@signalwayantibody.com

Support: tech@signalwayantibody.com

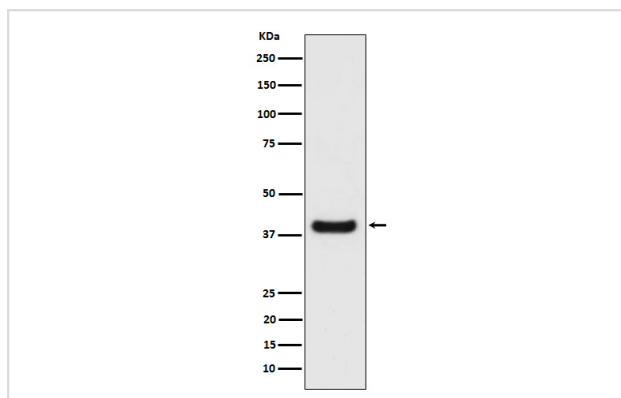
Description

Product Name	Erlin-2 Rabbit mAb
Host Species	Rabbit
Clonality	Monoclonal
Isotype	Rabbit IgG
Purification	Affinity-chromatography
Applications	WB IHC ICC/IF
Species Reactivity	Human Mouse
Specificity	Erlin-2 Antibody detects endogenous levels of total Erlin-2
Immunogen Description	A synthesized peptide derived from human Erlin-2
Other Names	ERLIN2; NET32; SPFH2;
Accession No.	Uniprot:O94905
Calculated MW	38kDa
Formulation	Rabbit IgG in phosphate buffered saline , pH 7.4, 150mM NaCl, 0.02% sodium azide and 50% glycerol.
Storage	Store at +4°C short term. Store at -20°C long term. Avoid freeze / thaw cycle.

Application Details

WB:1:500~1:2000IHC:1:50~1:200ICC/IF:1:50~1:200

Images



Western blot analysis of Erlin-2 expression in HeLa cell lysate.

Product Description

Component of the ERLIN1/ERLIN2 complex which mediates the endoplasmic reticulum-associated degradation (ERAD) of inositol 1,4,5-trisphosphate receptors (IP3Rs). Also involved in ITPR1 degradation by the ERAD pathway.

Note: This product is for in vitro research use only and is not intended for use in humans or animals.