

SBDS Rabbit mAb

Catalog No: #56949



Package Size: #56949-1 50ul #56949-2 100ul

Orders: order@signalwayantibody.comSupport: tech@signalwayantibody.com

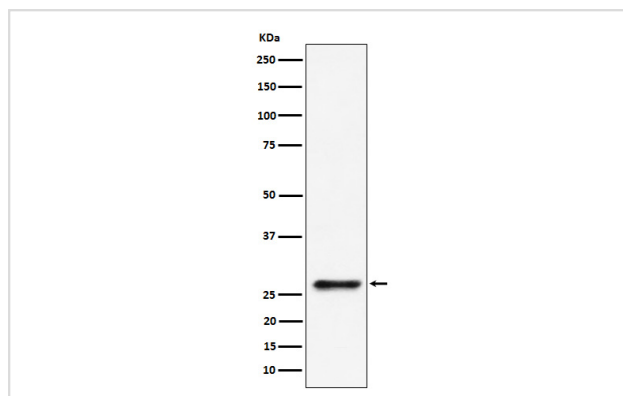
Description

Product Name	SBDS Rabbit mAb
Host Species	Rabbit
Clonality	Monoclonal
Isotype	Rabbit IgG
Purification	Affinity-chromatography
Applications	WB
Species Reactivity	Human Mouse Rat
Specificity	SBDS Antibody detects endogenous levels of total SBDS
Immunogen Description	A synthesized peptide derived from human SBDS
Other Names	CGI 97; sbds; SDS; SWDS;
Accession No.	Uniprot:Q9Y3A5
Calculated MW	29kDa
Formulation	Rabbit IgG in phosphate buffered saline , pH 7.4, 150mM NaCl, 0.02% sodium azide and 50% glycerol.
Storage	Store at +4°C short term. Store at -20°C long term. Avoid freeze / thaw cycle.

Application Details

WB:1:500~1:2000

Images



Western blot analysis of SBDS expression in 293 cell lysate.

Product Description

Required for the assembly of mature ribosomes and ribosome biogenesis.

Note: This product is for in vitro research use only and is not intended for use in humans or animals.