

## MVD Rabbit mAb

Catalog No: #56952

Package Size: #56952-1 50ul #56952-2 100ul

Orders: [order@signalwayantibody.com](mailto:order@signalwayantibody.com)Support: [tech@signalwayantibody.com](mailto:tech@signalwayantibody.com)

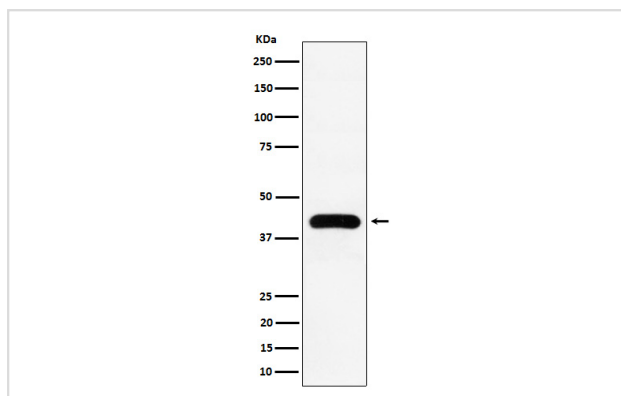
## Description

|                       |  |
|-----------------------|--|
| Product Name          | MVD Rabbit mAb   |
| Host Species          | Rabbit   |
| Clonality             | Monoclonal   |
| Isotype               | Rabbit IgG   |
| Purification          | Affinity-chromatography  |
| Applications          | WB   |
| Species Reactivity    | Human  |
| Specificity           | MVD Antibody detects endogenous levels of total MVD  |
| Immunogen Description | A synthesized peptide derived from human MVD   |
| Other Names           | MDDase; MPD; Mvd;  |
| Accession No.         | Uniprot:P53602   |
| Calculated MW         | 43kDa  |
| Formulation           | Rabbit IgG in phosphate buffered saline , pH 7.4, 150mM NaCl, 0.02% sodium azide and 50% glycerol. |
| Storage               | Store at +4°C short term. Store at -20°C long term. Avoid freeze / thaw cycle.                     |

## Application Details

WB: 1:500~1:2000

## Images



Western blot analysis of MVD expression in K562 cell lysate.

## Product Description

Performs the first committed step in the biosynthesis of isoprenes.

---

Note: This product is for in vitro research use only and is not intended for use in humans or animals.