

CD24 Rabbit mAb

Catalog No: #56960

Package Size: #56960-1 50ul #56960-2 100ul

Orders: order@signalwayantibody.comSupport: tech@signalwayantibody.com

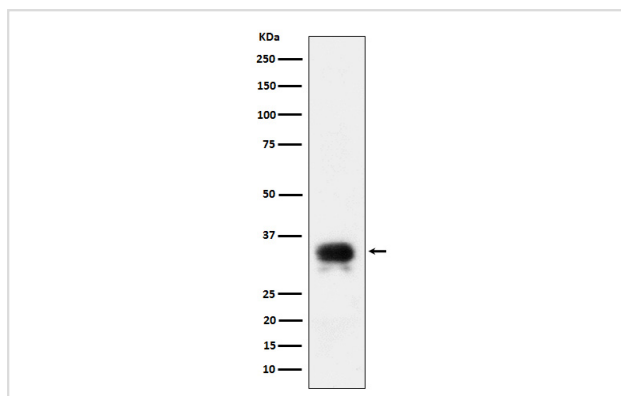
Description

Product Name	CD24 Rabbit mAb
Host Species	Rabbit
Clonality	Monoclonal
Isotype	Rabbit IgG
Purification	Affinity-chromatography
Applications	WB IP
Species Reactivity	Human
Specificity	CD24 Antibody detects endogenous levels of total CD24
Immunogen Description	A synthesized peptide derived from human CD24
Other Names	CD24; CD24 antigen; CD24A; HAS; Signal transducer CD24;
Accession No.	Uniprot:P25063
Calculated MW	31-45kDa
Formulation	Rabbit IgG in phosphate buffered saline , pH 7.4, 150mM NaCl, 0.02% sodium azide and 50% glycerol.
Storage	Store at +4°C short term. Store at -20°C long term. Avoid freeze / thaw cycle.

Application Details

WB:1:500~1:2000IP:1:50

Images



Western blot analysis of CD24 expression in SH-SY5Y cell lysate.

Product Description

Modulates B-cell activation responses. Signaling could be triggered by the binding of a lectin-like ligand to the CD24 carbohydrates, and transduced by the release of second messengers derived from the GPI-anchor. Promotes AG-dependent proliferation of B-cells, and prevents their terminal differentiation into antibody-forming cells.

Note: This product is for in vitro research use only and is not intended for use in humans or animals.