

## RGMA Rabbit mAb

Catalog No: #56961

Package Size: #56961-1 50ul #56961-2 100ul

Orders: order@signalwayantibody.com

Support: tech@signalwayantibody.com

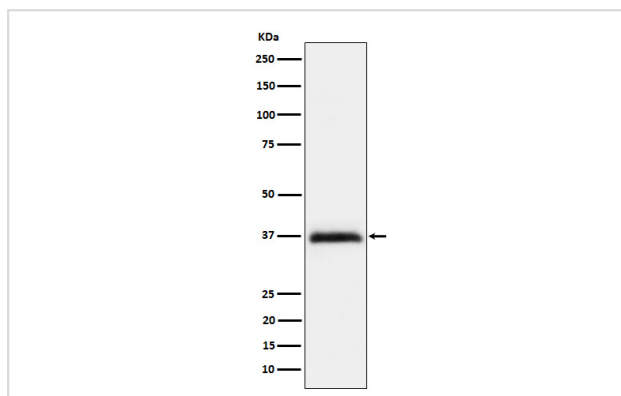
## Description

Product Name	RGMA Rabbit mAb
Host Species	Rabbit
Clonality	Monoclonal
Isotype	Rabbit IgG
Purification	Affinity-chromatography
Applications	WB ICC/IF
Species Reactivity	Human Mouse Rat
Specificity	RGMA Antibody detects endogenous levels of total RGMA
Immunogen Description	A synthesized peptide derived from human RGMA
Other Names	Repulsive guidance molecule A; RGM; RGM domain family member A; RGMA;
Accession No.	Uniprot:Q96B86
Calculated MW	37kDa
Formulation	Rabbit IgG in phosphate buffered saline , pH 7.4, 150mM NaCl, 0.02% sodium azide and 50% glycerol.
Storage	Store at +4°C short term. Store at -20°C long term. Avoid freeze / thaw cycle.

## Application Details

WB:1:500~1:2000 ICC/IF:1:50~1:200

## Images



Western blot analysis of RGMA expression in Hela cell lysate.

## Product Description

Member of the repulsive guidance molecule (RGM) family that performs several functions in the developing and adult nervous system. Regulates cephalic neural tube closure, inhibits neurite outgrowth and cortical neuron branching, and the formation of mature synapses. Binding to its receptor NEO1/neogenin induces activation of RHOA-ROCK1/Rho-kinase signaling pathway through UNC5B-ARHGEF12/LARG-PTK2/FAK1 cascade, leading to collapse of the neuronal growth cone and neurite outgrowth inhibition. Furthermore, RGMA binding to NEO1/neogenin leads to HRAS inactivation by influencing HRAS-PTK2/FAK1-AKT1 pathway. It also functions as a bone morphogenetic protein (BMP) coreceptor that may signal through SMAD1, SMAD5, and SMAD8.

---

Note: This product is for in vitro research use only and is not intended for use in humans or animals.