

HFE Rabbit mAb

Catalog No: #56970

Package Size: #56970-1 50ul #56970-2 100ul

Orders: order@signalwayantibody.comSupport: tech@signalwayantibody.com

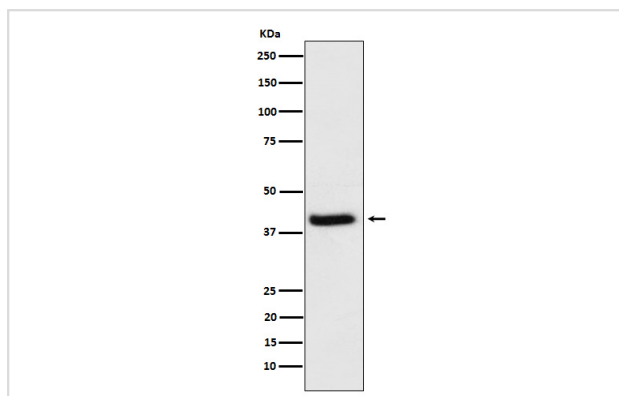
Description

Product Name	HFE Rabbit mAb
Host Species	Rabbit
Clonality	Monoclonal
Isotype	Rabbit IgG
Purification	Affinity-chromatography
Applications	WB
Species Reactivity	Human
Specificity	HFE Antibody detects endogenous levels of total HFE
Immunogen Description	A synthesized peptide derived from human HFE
Other Names	Hemochromatosis; HFE; HFE1; HLAH; MVCD7; TFQTL2;
Accession No.	Uniprot:Q30201
Calculated MW	40kDa
Formulation	Rabbit IgG in phosphate buffered saline , pH 7.4, 150mM NaCl, 0.02% sodium azide and 50% glycerol.
Storage	Store at +4°C short term. Store at -20°C long term. Avoid freeze / thaw cycle.

Application Details

WB: 1:500~1:2000

Images



Western blot analysis of HFE expression in HeLa cell lysate.

Product Description

Binds to transferrin receptor (TFR) and reduces its affinity for iron-loaded transferrin.

Note: This product is for in vitro research use only and is not intended for use in humans or animals.