

LTB4R Rabbit mAb

Catalog No: #56973

Package Size: #56973-1 50ul #56973-2 100ul

Orders: order@signalwayantibody.comSupport: tech@signalwayantibody.com

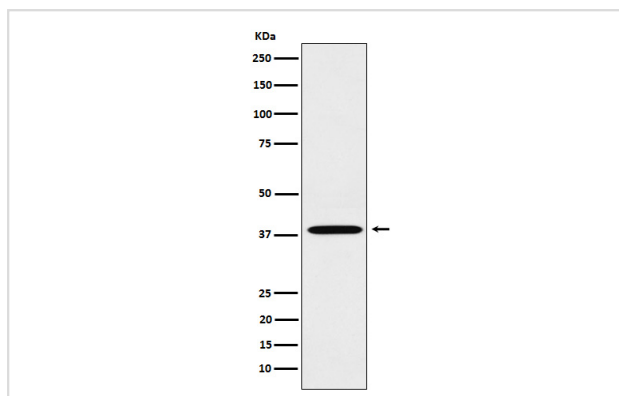
Description

| | |
|-----------------------|--|
| Product Name | LTB4R Rabbit mAb |
| Host Species | Rabbit |
| Clonality | Monoclonal |
| Isotype | Rabbit IgG |
| Purification | Affinity-chromatography |
| Applications | WB IHC |
| Species Reactivity | Human |
| Specificity | LTB4R Antibody detects endogenous levels of total LTB4R |
| Immunogen Description | A synthesized peptide derived from human LTB4R |
| Other Names | BLT; BLT1; BLTR; CMKRL1; GPR16; LTB4R1; LTBR1; P2RY7; P2Y7; |
| Accession No. | Uniprot:Q15722 |
| Calculated MW | 38kDa |
| Formulation | Rabbit IgG in phosphate buffered saline , pH 7.4, 150mM NaCl, 0.02% sodium azide and 50% glycerol. |
| Storage | Store at +4°C short term. Store at -20°C long term. Avoid freeze / thaw cycle. |

Application Details

WB:1:500~1:2000IHC:1:50~1:200

Images



Western blot analysis of LTB4R expression in A549 cell lysate.

Product Description

Receptor for extracellular ATP > UTP and ADP. The activity of this receptor is mediated by G proteins which activate a phosphatidylinositol-calcium second messenger system.

Note: This product is for in vitro research use only and is not intended for use in humans or animals.