

Fukutin Rabbit mAb

Catalog No: #56975

Package Size: #56975-1 50ul #56975-2 100ul

Orders: order@signalwayantibody.comSupport: tech@signalwayantibody.com

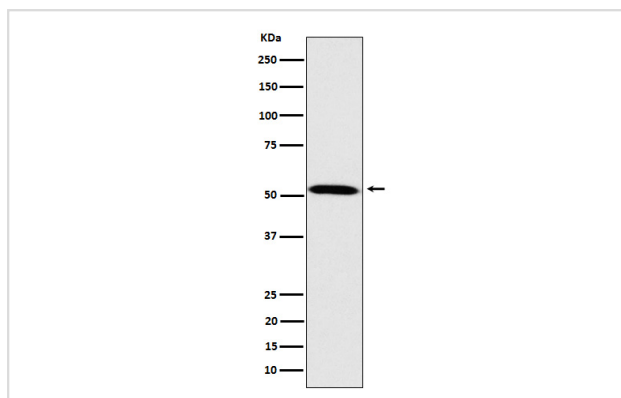
Description

Product Name	Fukutin Rabbit mAb
Host Species	Rabbit
Clonality	Monoclonal
Isotype	Rabbit IgG
Purification	Affinity-chromatography
Applications	WB IHC
Species Reactivity	Human Mouse Rat
Specificity	Fukutin Antibody detects endogenous levels of total Fukutin
Immunogen Description	A synthesized peptide derived from human Fukutin
Other Names	CMD1X; FCMD; FKTN; Fukutin; LGMD2M; MDDGA4; MDDGB4; MDDGC4;
Accession No.	Uniprot:O75072
Calculated MW	51kDa
Formulation	Rabbit IgG in phosphate buffered saline , pH 7.4, 150mM NaCl, 0.02% sodium azide and 50% glycerol.
Storage	Store at +4°C short term. Store at -20°C long term. Avoid freeze / thaw cycle.

Application Details

WB:1:500~1:2000IHC:1:50~1:200

Images



Western blot analysis of Fukutin expression in HeLa cell lysate.

Product Description

May be a glycosyltransferase which participates in glycosylation of alpha-dystroglycan/DAG1. May interact with and reinforce a large complex encompassing the outside and inside of muscle membranes. Could be involved in brain development.

Note: This product is for in vitro research use only and is not intended for use in humans or animals.