

CPSF73 Rabbit mAb

Catalog No: #56984



Package Size: #56984-1 50ul #56984-2 100ul

Orders: order@signalwayantibody.comSupport: tech@signalwayantibody.com

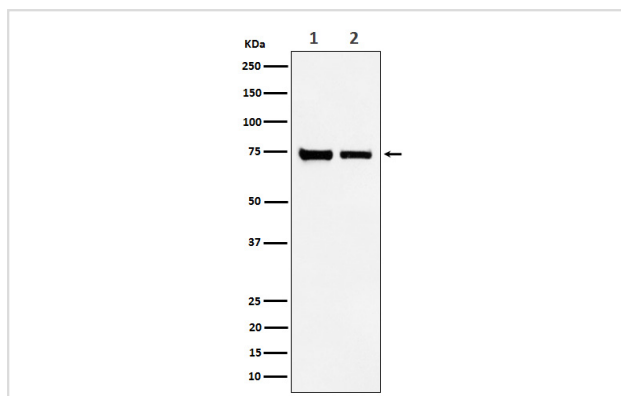
Description

Product Name	CPSF73 Rabbit mAb
Host Species	Rabbit
Clonality	Monoclonal
Isotype	Rabbit IgG
Purification	Affinity-chromatography
Applications	WB ICC/IF FC
Species Reactivity	Human Mouse Rat
Specificity	CPSF73 Antibody detects endogenous levels of total CPSF73
Immunogen Description	A synthesized peptide derived from human CPSF73
Other Names	CPSF; cpsf3; CPSF73; YSH1;
Accession No.	Uniprot:Q9UKF6
Calculated MW	77kDa
Formulation	Rabbit IgG in phosphate buffered saline , pH 7.4, 150mM NaCl, 0.02% sodium azide and 50% glycerol.
Storage	Store at +4°C short term. Store at -20°C long term. Avoid freeze / thaw cycle.

Application Details

WB:1:500~1:2000 ICC/IF:1:50~1:200 FC:1:50

Images



Western blot analysis of CPSF73 expression in (1) HeLa cell lysate; (2) NIH/3T3 cell lysate.

Product Description

Component of the cleavage and polyadenylation specificity factor (CPSF) complex that play a key role in pre-mRNA 3'-end formation, recognizing the AAUAAA signal sequence and interacting with poly(A) polymerase and other factors to bring about cleavage and poly(A) addition.

Note: This product is for in vitro research use only and is not intended for use in humans or animals.