

SRP19 Rabbit mAb

Catalog No: #56986

Package Size: #56986-1 50ul #56986-2 100ul

Orders: order@signalwayantibody.comSupport: tech@signalwayantibody.com

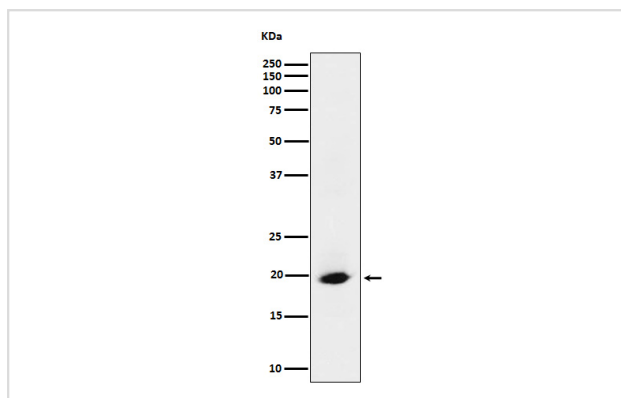
Description

Product Name	SRP19 Rabbit mAb
Host Species	Rabbit
Clonality	Monoclonal
Isotype	Rabbit IgG
Purification	Affinity-chromatography
Applications	WB IHC ICC/IF
Species Reactivity	Human Mouse Rat
Specificity	SRP19 Antibody detects endogenous levels of total SRP19
Immunogen Description	A synthesized peptide derived from human SRP19
Other Names	SRP19;
Accession No.	Uniprot:P09132
Calculated MW	20kDa
Formulation	Rabbit IgG in phosphate buffered saline , pH 7.4, 150mM NaCl, 0.02% sodium azide and 50% glycerol.
Storage	Store at +4°C short term. Store at -20°C long term. Avoid freeze / thaw cycle.

Application Details

WB:1:500~1:2000IHC:1:50~1:200ICC/IF:1:50~1:200

Images



Western blot analysis of SRP19 expression in HeLa cell lysate.

Product Description

Signal-recognition-particle assembly, binds directly to 7S RNA and mediates binding of the 54 kDa subunit of the SRP.

Note: This product is for in vitro research use only and is not intended for use in humans or animals.