

IL15RA Rabbit mAb

Catalog No: #56990

Package Size: #56990-1 50ul #56990-2 100ul

Orders: order@signalwayantibody.com

Support: tech@signalwayantibody.com

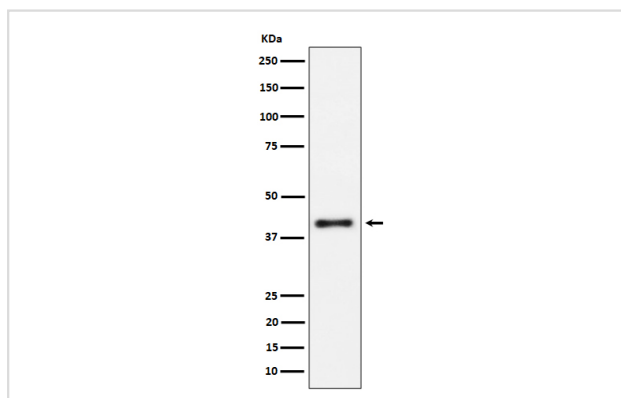
Description

Product Name	IL15RA Rabbit mAb
Host Species	Rabbit
Clonality	Monoclonal
Isotype	Rabbit IgG
Purification	Affinity-chromatography
Applications	WB ICC/IF
Species Reactivity	Human
Specificity	IL15RA Antibody detects endogenous levels of total IL15RA
Immunogen Description	A synthesized peptide derived from human IL15RA
Other Names	CD215; IL 15R alpha; IL-15 receptor subunit alpha; IL-15R-alpha; IL-15RA; Il15ra; Interleukin 15 receptor alpha; sIL-15 receptor subunit alpha; sIL-15R-alpha; sIL-15RA ; Soluble interleukin 15 receptor subunit alpha;
Accession No.	Uniprot:Q13261
Calculated MW	38kDa
Formulation	Rabbit IgG in phosphate buffered saline , pH 7.4, 150mM NaCl, 0.02% sodium azide and 50% glycerol.
Storage	Store at +4°C short term. Store at -20°C long term. Avoid freeze / thaw cycle.

Application Details

WB:1:500~1:2000 ICC/IF:1:50~1:200

Images



Western blot analysis of IL15RA expression in Raji cell lysate.

Product Description

Receptor for interleukin-15. Expression of different isoforms may alter or interfere with signal transduction. Isoform 5, isoform 6, isoform 7 and isoform 8 do not bind IL15. Signal transduction involves STAT3, STAT5, STAT6, JAK2 (By similarity) and SYK.

Note: This product is for in vitro research use only and is not intended for use in humans or animals.