

HEAB Rabbit mAb

Catalog No: #56992

Package Size: #56992-1 50ul #56992-2 100ul

Orders: order@signalwayantibody.com

Support: tech@signalwayantibody.com

Description

Product Name	HEAB Rabbit mAb
Host Species	Rabbit
Clonality	Monoclonal
Isotype	Rabbit IgG
Purification	Affinity-chromatography
Applications	WB IHC FC
Species Reactivity	Human
Specificity	HEAB Antibody detects endogenous levels of total HEAB
Immunogen Description	A synthesized peptide derived from human HEAB
Other Names	clp1; hClp1;
Accession No.	Uniprot:Q92989
Calculated MW	48kDa
Formulation	Rabbit IgG in phosphate buffered saline , pH 7.4, 150mM NaCl, 0.02% sodium azide and 50% glycerol.
Storage	Store at +4°C short term. Store at -20°C long term. Avoid freeze / thaw cycle.

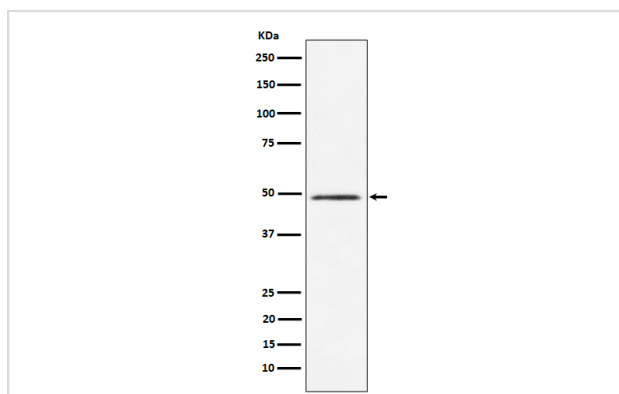
Application Details

WB:1:500~1:2000

IHC:1:50~1:200

FC:1:50

Images



Western blot analysis of HEAB expression in HeLa cell lysate.

Product Description

Polynucleotide kinase that can phosphorylate the 5'-hydroxyl groups of double-stranded RNA (dsRNA), single-stranded RNA (ssRNA), double stranded DNA (dsDNA) and double-stranded DNA:RNA hybrids.

Note: This product is for in vitro research use only and is not intended for use in humans or animals.