

## PTPN1/2 Rabbit mAb

Catalog No: #57007

Package Size: #57007-1 50ul #57007-2 100ul

Orders: order@signalwayantibody.com

Support: tech@signalwayantibody.com

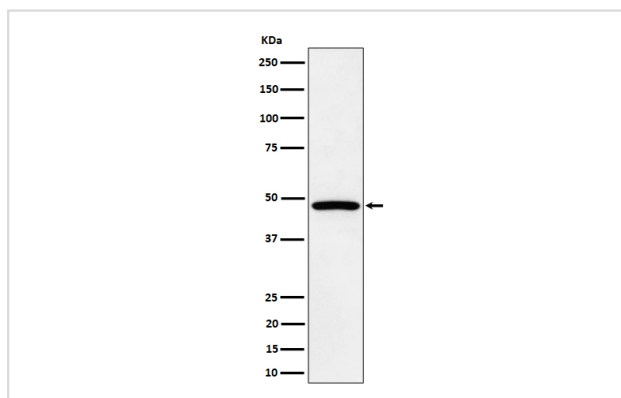
## Description

Product Name	PTPN1/2 Rabbit mAb
Host Species	Rabbit
Clonality	Monoclonal
Isotype	Rabbit IgG
Purification	Affinity-chromatography
Applications	WB IP FC
Species Reactivity	Human Mouse
Specificity	PTPN1/2 Antibody detects endogenous levels of total PTPN1/2
Immunogen Description	A synthesized peptide derived from human PTPN1/2
Other Names	Protein tyrosine phosphatase non receptor type 2; PTN2; Ptpn2; PTPT; T cell protein tyrosine phosphatase; TC PTP; TCELLPTP; TCPTP; Tyrosine protein phosphatase non receptor type 2;
Accession No.	Uniprot:P18031/P17706
Calculated MW	40-48kDa
Formulation	Rabbit IgG in phosphate buffered saline , pH 7.4, 150mM NaCl, 0.02% sodium azide and 50% glycerol.
Storage	Store at +4°C short term. Store at -20°C long term. Avoid freeze / thaw cycle.

## Application Details

WB:1:500~1:2000IP:1:50FC:1:50

## Images



Western blot analysis of PTPN1/2 expression in HepG2 cell lysate.

## Product Description

Non-receptor type tyrosine-specific phosphatase that dephosphorylates receptor protein tyrosine kinases including INSR, EGFR, CSF1R, PDGFR.

---

Note: This product is for in vitro research use only and is not intended for use in humans or animals.