

## CHM Rabbit mAb

Catalog No: #57010

Package Size: #57010-1 50ul #57010-2 100ul

Orders: [order@signalwayantibody.com](mailto:order@signalwayantibody.com)Support: [tech@signalwayantibody.com](mailto:tech@signalwayantibody.com)

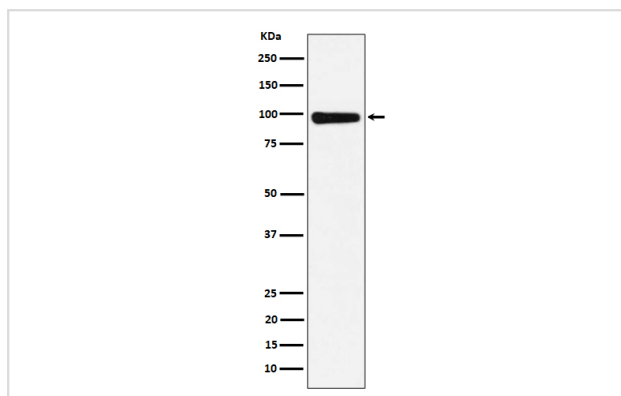
## Description

Product Name	CHM Rabbit mAb
Host Species	Rabbit
Clonality	Monoclonal
Isotype	Rabbit IgG
Purification	Affinity-chromatography
Applications	WB ICC/IF
Species Reactivity	Human Mouse Rat
Specificity	CHM Antibody detects endogenous levels of total CHM
Immunogen Description	A synthesized peptide derived from human CHM
Other Names	CHM; Choroideraemia protein; GGTA; REP1; TCD;
Accession No.	Uniprot:P24386
Calculated MW	95kDa
Formulation	Rabbit IgG in phosphate buffered saline , pH 7.4, 150mM NaCl, 0.02% sodium azide and 50% glycerol.
Storage	Store at +4°C short term. Store at -20°C long term. Avoid freeze / thaw cycle.

## Application Details

WB:1:500~1:2000 ICC/IF:1:50~1:200

## Images



Western blot analysis of CHM expression in 293T cell lysate.

## Product Description

Binds unprenylated Rab proteins, presents it to the catalytic Rab GGTase dimer, and remains bound to it after the geranylgeranyl transfer reaction.

---

Note: This product is for in vitro research use only and is not intended for use in humans or animals.