

## UQCRH Rabbit mAb

Catalog No: #57020

Package Size: #57020-1 50ul #57020-2 100ul

Orders: order@signalwayantibody.com

Support: tech@signalwayantibody.com

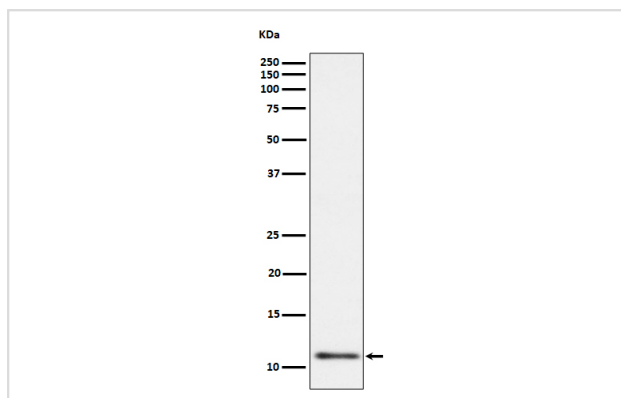
## Description

|                       |  |
|-----------------------|--|
| Product Name          | UQCRH Rabbit mAb   |
| Host Species          | Rabbit   |
| Clonality             | Monoclonal   |
| Isotype               | Rabbit IgG   |
| Purification          | Affinity-chromatography  |
| Applications          | WB IHC   |
| Species Reactivity    | Human Mouse Rat  |
| Specificity           | UQCRH Antibody detects endogenous levels of total UQCRH  |
| Immunogen Description | A synthesized peptide derived from human UQCRH   |
| Other Names           | QCR6; UQCR8;   |
| Accession No.         | Uniprot:P07919   |
| Calculated MW         | 11kDa  |
| Formulation           | Rabbit IgG in phosphate buffered saline , pH 7.4, 150mM NaCl, 0.02% sodium azide and 50% glycerol. |
| Storage               | Store at +4°C short term. Store at -20°C long term. Avoid freeze / thaw cycle.                     |

## Application Details

WB:1:500~1:2000IHC:1:50~1:200

## Images



Western blot analysis of UQCRH expression in HL60 cell lysate.

## Product Description

UQCRH is a component of the ubiquinol-cytochrome c reductase complex (complex III or cytochrome b-c1 complex), which is part of the mitochondrial respiratory chain. It may play a role in electron transfer between cytochromes c1 and c.

---

Note: This product is for in vitro research use only and is not intended for use in humans or animals.