

# PKN2 Rabbit mAb

Catalog No: #57026



Package Size: #57026-1 50ul #57026-2 100ul

Orders: [order@signalwayantibody.com](mailto:order@signalwayantibody.com)

Support: [tech@signalwayantibody.com](mailto:tech@signalwayantibody.com)

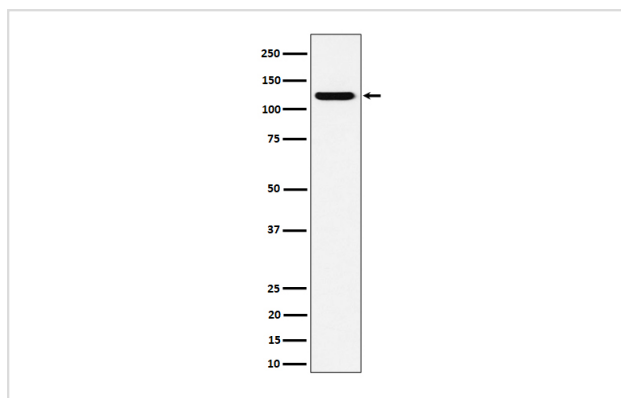
## Description

Product Name	PKN2 Rabbit mAb
Host Species	Rabbit
Clonality	Monoclonal
Isotype	Rabbit IgG
Purification	Affinity-chromatography
Applications	WB ICC/IF
Species Reactivity	Human Mouse Rat
Specificity	PKN2 Antibody detects endogenous levels of total PKN2
Immunogen Description	A synthesized peptide derived from human PKN2
Other Names	PAK2; PKN gamma; PKN2; PRK2; PRKCL2;
Accession No.	Uniprot:Q16513
Calculated MW	140kDa
Formulation	Rabbit IgG in phosphate buffered saline , pH 7.4, 150mM NaCl, 0.02% sodium azide and 50% glycerol.
Storage	Store at +4°C short term. Store at -20°C long term. Avoid freeze / thaw cycle.

## Application Details

WB:1:500~1:2000 ICC/IF:1:50~1:200

## Images



Western blot analysis of PKN2 expression in HeLa cell lysate.

## Product Description

Exhibits a preference for highly basic protein substrates.

---

Note: This product is for in vitro research use only and is not intended for use in humans or animals.