

ALDH16A1 Rabbit mAb

Catalog No: #57031

Package Size: #57031-1 50ul #57031-2 100ul

Orders: order@signalwayantibody.comSupport: tech@signalwayantibody.com

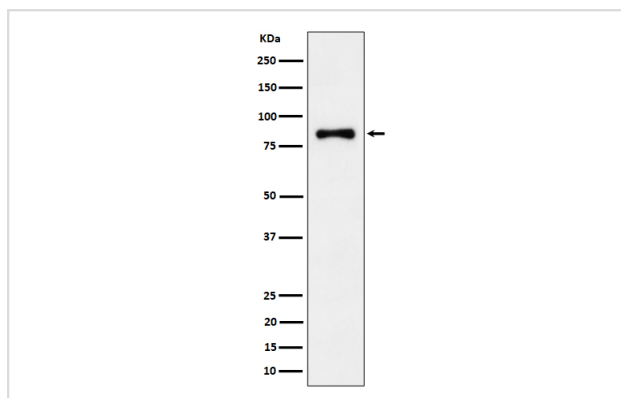
Description

Product Name	ALDH16A1 Rabbit mAb
Host Species	Rabbit
Clonality	Monoclonal
Isotype	Rabbit IgG
Purification	Affinity-chromatography
Applications	WB IHC
Species Reactivity	Human Mouse Rat
Specificity	ALDH16A1 Antibody detects endogenous levels of total ALDH16A1
Immunogen Description	A synthesized peptide derived from human ALDH16A1
Other Names	Aldh16a1;
Accession No.	Uniprot:Q8IZ83
Calculated MW	80kDa
Formulation	Rabbit IgG in phosphate buffered saline , pH 7.4, 150mM NaCl, 0.02% sodium azide and 50% glycerol.
Storage	Store at +4°C short term. Store at -20°C long term. Avoid freeze / thaw cycle.

Application Details

WB:1:500~1:2000IHC:1:50~1:200

Images



Western blot analysis of ALDH16A1 expression in Jurkat cell lysate.

Product Description

This gene encodes a member of the aldehyde dehydrogenase superfamily. The family members act on aldehyde substrates and use nicotinamide adenine dinucleotide phosphate (NADP) as a cofactor.

Note: This product is for in vitro research use only and is not intended for use in humans or animals.