

Calcipressin 1 Rabbit mAb

Catalog No: #57033



Package Size: #57033-1 50ul #57033-2 100ul

Orders: order@signalwayantibody.comSupport: tech@signalwayantibody.com

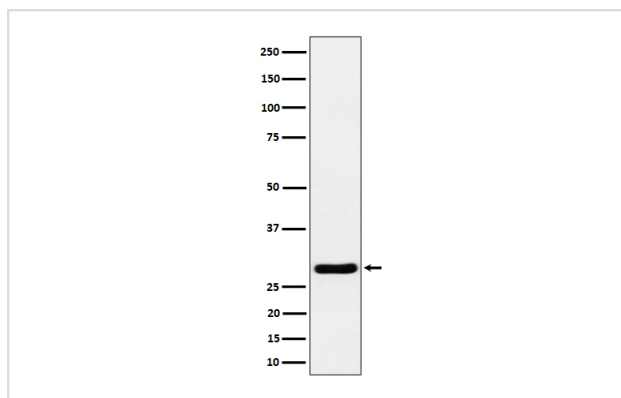
Description

Product Name	Calcipressin 1 Rabbit mAb
Host Species	Rabbit
Clonality	Monoclonal
Isotype	Rabbit IgG
Purification	Affinity-chromatography
Applications	WB
Species Reactivity	Human Mouse Rat
Specificity	Calcipressin 1 Antibody detects endogenous levels of total Calcipressin 1
Immunogen Description	A synthesized peptide derived from human Calcipressin 1
Other Names	Adapt78; Calcipressin 1; CSP1; DSC1; DSCR1; MCIP1; RCAN1; RCN1;
Accession No.	Uniprot:P53805
Calculated MW	28kDa
Formulation	Rabbit IgG in phosphate buffered saline , pH 7.4, 150mM NaCl, 0.02% sodium azide and 50% glycerol.
Storage	Store at +4°C short term. Store at -20°C long term. Avoid freeze / thaw cycle.

Application Details

WB: 1:500~1:2000

Images



Western blot analysis of Calcipressin 1 expression in mouse heart cell lysate.

Product Description

Inhibits calcineurin-dependent transcriptional responses by binding to the catalytic domain of calcineurin A. Could play a role during central nervous system development.

Note: This product is for in vitro research use only and is not intended for use in humans or animals.