

Bag1 Rabbit mAb

Catalog No: #57042

Package Size: #57042-1 50ul #57042-2 100ul

Orders: order@signalwayantibody.comSupport: tech@signalwayantibody.com

Description

| | |
|-----------------------|--|
| Product Name | Bag1 Rabbit mAb |
| Host Species | Rabbit |
| Clonality | Monoclonal |
| Isotype | Rabbit IgG |
| Purification | Affinity-chromatography |
| Applications | WB IHC ICC/IF |
| Species Reactivity | Human Mouse Rat |
| Specificity | Bag1 Antibody detects endogenous levels of total Bag1 |
| Immunogen Description | A synthesized peptide derived from human Bag1 |
| Other Names | BAG1; HAP1; RAP46; |
| Accession No. | Uniprot:Q99933 |
| Calculated MW | 33,46,50kDa |
| Formulation | Rabbit IgG in phosphate buffered saline , pH 7.4, 150mM NaCl, 0.02% sodium azide and 50% glycerol. |
| Storage | Store at +4°C short term. Store at -20°C long term. Avoid freeze / thaw cycle. |

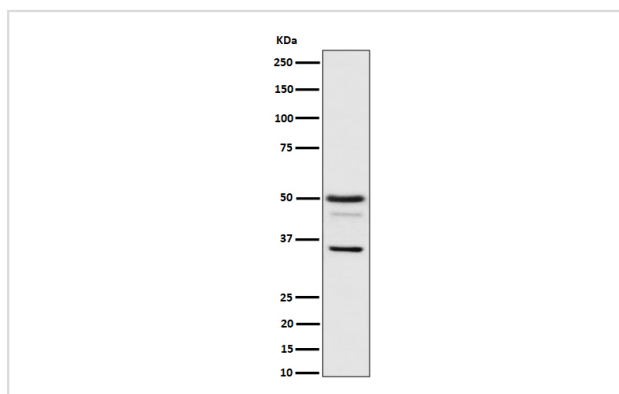
Application Details

WB: 1:500~1:2000

IHC: 1:50~1:200

ICC/IF: 1:50~1:200

Images



Western blot analysis of Bag1 expression in HeLa cell lysate.

Product Description

Inhibits the chaperone activity of HSP70/HSC70 by promoting substrate release. Inhibits the pro-apoptotic function of PPP1R15A, and has anti-apoptotic activity. Markedly increases the anti-cell death function of BCL2 induced by various stimuli.

Note: This product is for in vitro research use only and is not intended for use in humans or animals.